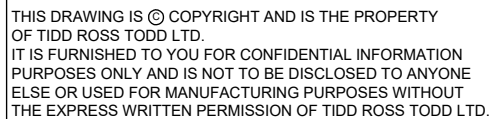


This technical drawing is an exploded view of a truck chassis, showing the engine, transmission, and rear axle assembly. The engine is located at the front left, and the transmission is positioned below it. The rear axle assembly is shown at the bottom right, with the word "OVER" visible on the side of the axle housing. The chassis frame is a long, rectangular structure with multiple cross-members and mounting points for the engine, transmission, and rear axle. The diagram is a black and white line drawing, typical of technical manuals.



**WELDING:** ALL INFORMATION SHALL COMPLY WITH NZ/AS 1554:2000 PT 1 CATEGORY SP UNLESS OTHERWISE STATED AND SHALL BE WELDED TO A QUALIFIED PROCEDURE, BY A WELDER QUALIFIED FOR THE APPROPRIATE POSITION AND SUPERVISED BY A WELDING SUPERVISOR

REV	DATE	COMMENT	NAME

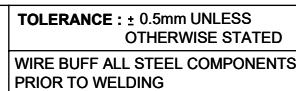
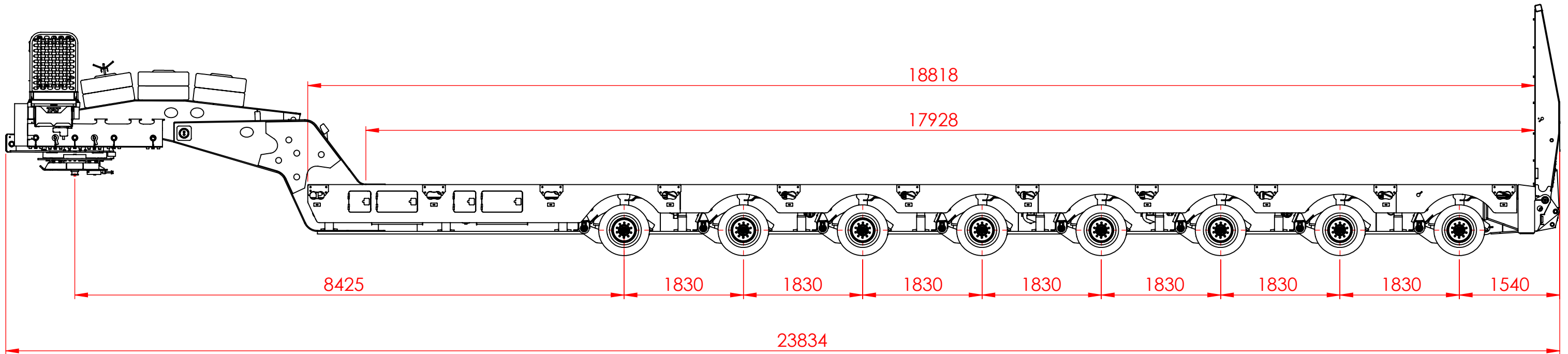


ISO 9001

	NAME	DATE	TITLE:  8 X 8 PLATFORM		
DRAWN	DT	23/04/2018			
CHK'D	-	-			
APPV'D	-	-	SHEET 1 OF 3	DWG NO.	REVISION
DO NOT SCALE DRAWINGS IN mm's		<b>STATUS - M</b>	SCALE:1:55	096-A100W	A

A

Technical drawing of the rear view of a truck chassis. The drawing shows the rear axle assembly, suspension components, and the rear of the cargo box. A dimension line on the right side indicates a width of 3340 mm.



**WELDING:** ALL INFORMATION SHALL COMPLY WITH NZ/AS 1554:2000 PT 1 CATEGORY SP UNLESS OTHERWISE STATED AND SHALL BE WELDED TO A QUALIFIED PROCEDURE, BY A WELDER QUALIFIED FOR THE APPROPRIATE POSITION AND SUPERVISED BY A WELDING SUPERVISOR



**TTRT**  
TIDD ROSS TODD LIMITED

	NAME	DATE
DRAWN	DT	23/04/2018
CHK'D	-	-
APPV'D	-	-
DO NOT SCALE DRAWINGS IN mm's		<b><i>STATUS - M</i></b>

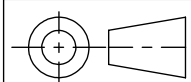
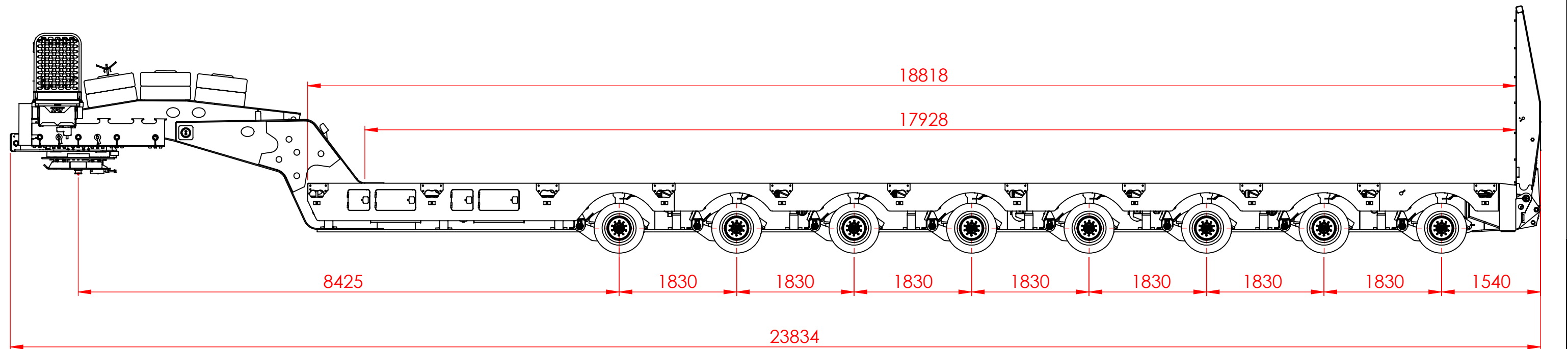
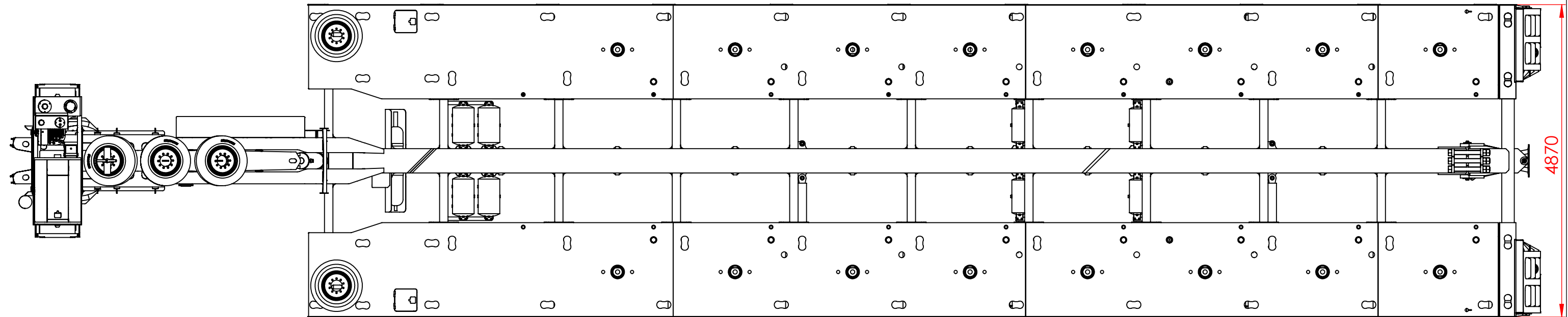
TITLE:	8 X 8 PLATFORM
--------	----------------

SHEET 2 OF 3
SCALE:1:60

DWG NO.  
096-A100W

REVISION  
A

**SPECIFICATIONS SUBJECT TO  
CHANGE WITHOUT NOTICE**



<b>TOLERANCE : <math>\pm 0.5\text{mm}</math> UNLESS OTHERWISE STATED</b>
<b>WIRE BUFF ALL STEEL COMPONENTS PRIOR TO WELDING</b>

**WELDING:** ALL INFORMATION SHALL COMPLY WITH NZ/AS 1554:2000 PT 1 CATEGORY SP UNLESS OTHERWISE STATED AND SHALL BE WELDED TO A QUALIFIED PROCEDURE, BY A WELDER QUALIFIED FOR THE APPROPRIATE POSITION AND SUPERVISED BY A WELDING SUPERVISOR

0.	REV	DATE	COMMENT
			NAME



***TIDD ROSS TODD LIMITED***

48 Maui Street  
Hamilton  
New Zealand

Phone +64 7 849 4839  
Fax +64 7 849 3628  
Email : [trt@trt.co.nz](mailto:trt@trt.co.nz)

ISO 9001

	NAME	DATE
DRAWN	DT	23/04/2018
CHK'D	-	-
APPV'D	-	-
DO NOT SCALE DRAWINGS IN mm's		<b><i>STATUS - M</i></b>

TITLE:
--------

8 X 8 PLATFORM

SHEET 3 OF 3

**M** SCALE:1:60

DWG NO.
---------

096-A100W

REVISION

A