



...for the long haul

IN GEAR

OCTOBER - NOVEMBER 2019



PROUDLY NZ
OWNED & OPERATED



TRACTION
AIR
SMART CTI

NEW SMARTS NEW LOOK

SEE INSIDE FOR THE FULL STORY



HIAB

HOW TO CHOOSE
YOUR HIAB



ZEPRO

FIND THE RIGHT
ZEPRO SEAL

UPDATE FROM LAWRENCE

TRT PARTS

Welcome to the second edition of In-Gear. We've received positive feedback on the new format and lots of entries for our "shout the team" competition. The winners will be drawn early October and notified.

It's been another busy period for TRT attending both the NZ Heavy Haulage and Crane Association Conferences. They are great events and opportunities for the team to connect with customers, suppliers and partners. Next is CICA (Crane Industry Council of Australia) from 17-19 of October in the Hunter Valley, NSW.

HIAB continues to move from strength to strength with a great HIAB 201-4 Sea Crane installation with Sanford on their mussel harvesting boat. Plus, our new Traction Air product is launching this month and already generating strong interest - more inside.

In terms of what's happening out there, we see the construction sector slowing as infrastructure projects wrap up and limited government investment moving forward. Balanced with log export prices coming back a little and dairy season underway, creating increased demand for parts and service to keep everyone moving.

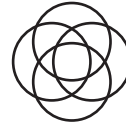
Finally, TIDD PC28 production is in full swing and we're proud to see the new leading-edge house trailer depart for Mackay and Sons in Australia plus our new modular trailer for Universal Cranes. Keep watch for the next IN GEAR for photos.



Lawrence Baker
COO, Lawrence Baker



**PARTNERS IN
YOUR SUCCESS**
We Know What It Takes



EXTENSIVE RANGE
What We Don't Stock
We'll Source



**EXPERTS IN
OUR FIELD**
We Can Solve It



KEEP YOU MOVING
Right Part, On Time

WHAT'S HAPPENING



Farewell and thank you to Dave Buckle who recently retired. Dave was at TRT for 15 years as one of our Parts Sales Consultants.



Central Machine Hire from Wanaka takes delivery of their new GMK4100L-1.



TRT attended the Heavy Haulage Association Conference in Nelson where we introduced our latest trailer innovations.



Holz Heavy Haulage with their TRT 5x8 Widening Low Loader and 2x8 Widening dolly loaded with a 84t Piling machine.

HOT DEALS



Frasle Disc Brake Pads

Knorr SB/SN
FLPD116-K21-930
To suit ROR DX195
FLPD138-K10-930

\$115.00

SAVE \$80

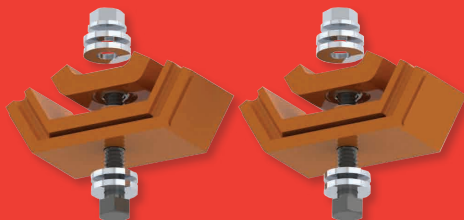


Pilot Supreme Seat

PSP1102-216

\$1,795.00

SAVE \$505

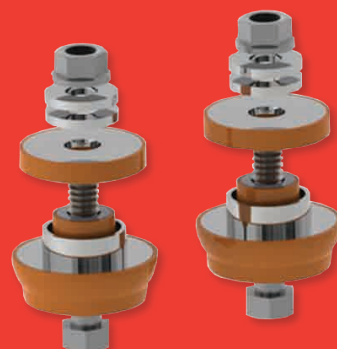


Stemco Engine Mounts (Kenworth)

AM11760

\$495.00 PAIR

SAVE \$165



Stemco Engine Mounts (Kenworth)

AM11762

\$270.00 PAIR

SAVE \$90



SAF Brake Calipers

SF3080003200
SF3080003300

FROM

\$575.00 EA

SAVE \$240



Genuine Hino Torque Rod Bushes

HIS40JJ-E0090

\$42.00 EA

SAVE \$15.50



Jost Alloy Wheels

JTJW19527526IPOE

\$349.00

SAVE \$67

Prices shown exclude GST & freight and are valid from 1st October 2019 to 30th November 2019 or while stocks last.

IN THE NEWS

New CTI System, New Look

Traction Air®, TRT's central tyre inflation system has undergone a complete evolution in technology and its look. Launching in October 2019, TRT is set to offer a new multi channel system to New Zealand and Australian customers.

This new advanced system is based on an extensive 2½ year research and development project in Scandinavia.

TRT have always ensured that as technology in vehicles and operations has advanced so to has the capability of Traction Air. Traction Air was developed over 20 years ago by TRT and is installed on trucks throughout NZ, Australia and the Pacific. However, TRT has not focused on CTI solutions for other regions until now. Gavin Halley, National Sales Manger explains "About 4 years ago we looked at CTI in Europe, and in particular Scandinavia. With some of the most extreme operating environments, we wanted to understand how and if Traction Air could be adapted to meet their specific requirements."

Gavin continues "with a bit of TRT blue sky thinking, an investment in research, development and product testing in NZ and Sweden over the past 2 ½ years, we have created a brand new CTI system with greater capabilities, with the ability to integrate with the vehicle using a common BUS signal. This new CTI system is designed for European conditions, which has a direct spinoff for our loyal local customers."



New wheel end options



New pressure management on TIDD PC28 Crane



1997 - 2008

Traction Air
Central Tyre Inflation

2009 - 2019



Today



LCD Touch Screen

"The new system offers multi channel options to run front axle, drive axle and trailer independently, and all at the same time - a common European requirement. To enable this, we have had to develop an entirely new system from the ECU (cab controller) and software to the wheel ends and pressure cells. The ECU options include a DIN mount to fit standard radio slots and LCD touch screens for multi-channel options. The pressure cell is made from stainless steel to withstand salt roads and has integrated thermal switches with heating elements to allow the system to operate in -40°. In addition the pressure cell has an IP66 rating for protection from the elements.

To celebrate the new multi channel system and all of the new advances in technology, TRT have also designed new branding for Traction



DIN Mount ECU

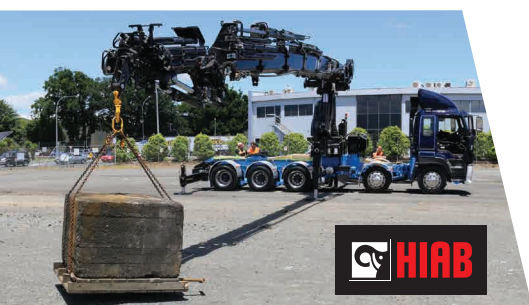
Air. "Something we have always done," says Gavin.

The new Traction Air system is still autonomous, but there are allowances in the design for it to be interfaced with a vehicle and other 3rd party applications in the future. Gavin confirms, "this new system does not replace the current system, it is another option for our customers to consider. While some fleets may choose to migrate to the new Traction Air system, we will be fully supporting both systems at TRT for the foreseeable future."

TRT are distributing the new system through Bevola in Scandinavia and working directly within the UK markets. There are a number of commercial installations in progress. This new system will be made available to NZ and Australian customers in the coming months.

How to Choose the Right Hiab Crane

You will need to look for capacity and capbility that will suit both current and future plans for your operation. No one ever tells us "my crane is too powerful".



1. What type of loads you will move and how heavy they will be? This is the first step in determining the basic crane capacity you need.
2. Reach is the second step to work out basic capacity. The farther away you will work from your truck, the larger the crane you will need to handle the weight.
3. Get the right boom. For example, if you want to perform heavy lifts, but always near your truck, a short-boom EP crane will give you greater capacity for less. If you need to cover your load but want to avoid detaching the tool between jobs, you will want a Z-boom that folds up.
4. Manual or remote control? Manual control is economical and suited to many jobs.

However, remote control provides greater flexibility, safety and visibility of the load.

5. Select the right control system. The more advanced the control system, the more complex tasks a crane can preform, and in the hands of an expert operator it can save considerable amounts of time, energy and fuel.
6. Do you need extra speed, stability or capcity? How much will loads vary? Consider other attachments and features you need to get the job done, from pallet forks, log or recycling grapples to augers.

If you are considering a truck loader crane for your fleet, our experts can work with you to determine the best capacity and configuration for your operation.

EVERYDAY DEALS



ROR CS9 Pivot Bush Kit
RO21230041K

\$110.00

SAVE UP TO \$28

TRT has fitting tools
for this bush kit
available for hire.



**Stemco Voyager
Hub Seals**

AM373-0143 (46300)
AM383-0136 (35058, 35066)
AM393-0173 (47691, 47697)

FROM

\$29.95

SAVE UP TO \$18

FREE fitting tools
with purchases of
12 or more seals.



Bush & Pin Assembly

Equaliser Reyco 1"5/8
AMTRT1109ANZ

\$115.00

SAVE \$54

Equaliser Fruehauf
AUTRK5384HD

\$47.99

SAVE \$11.50

PARTS PACKAGES

**Brake Kit to suit ROR
Low Loader Applications**

TDBKTM10

10 stud brake drum 311 x 190 Qty 2
Lined brake shoe kit 311 x 190 Qty 2
Hub seal qty 2

\$595.00



PTO & Pump Kits

PTO and Pump kits for a large
range of applications including
Eaton Roadranger and ZF.

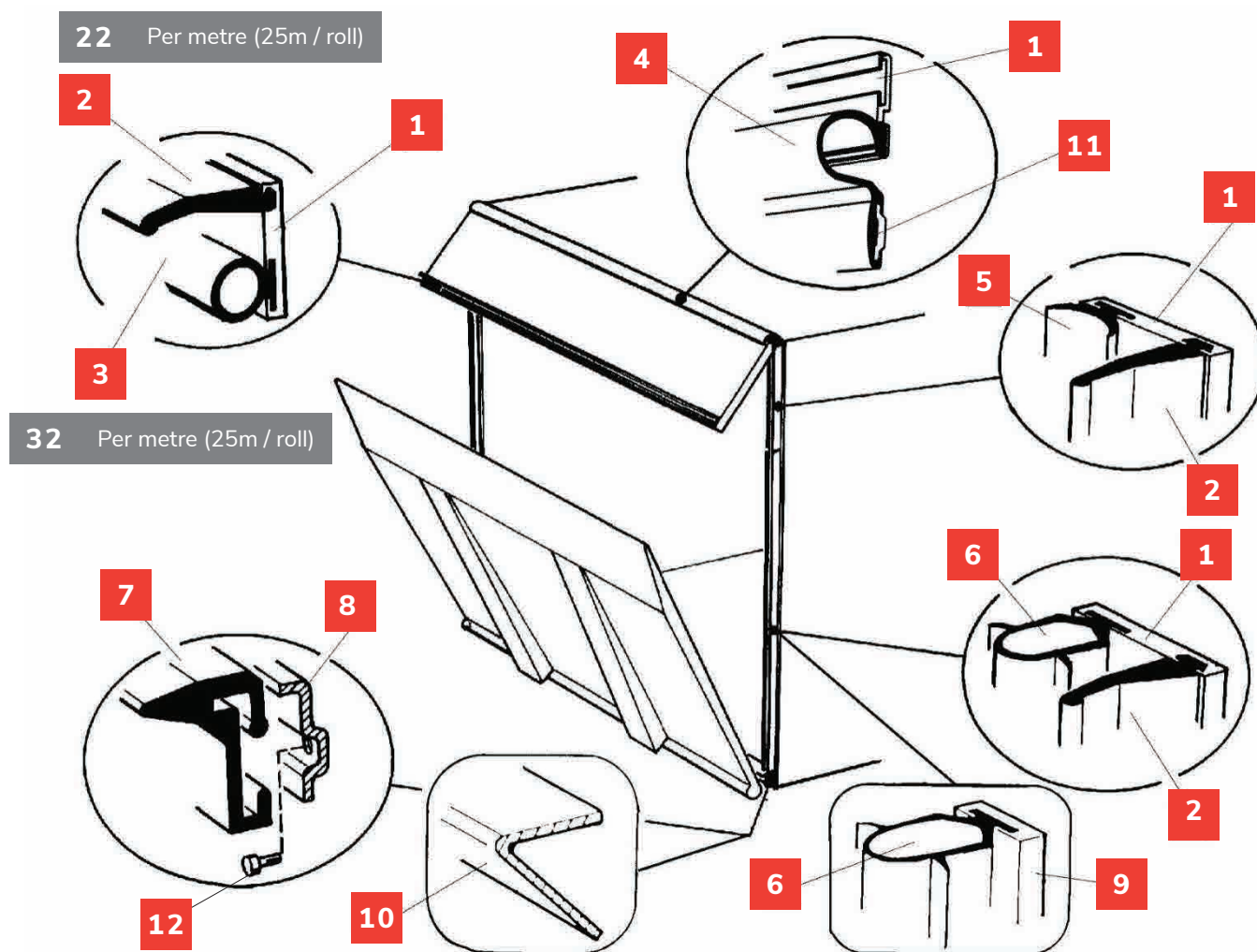
**PRICING DEPENDENT
ON APPLICATION**



Prices shown exclude GST & freight and are valid from 1st October 2019 to 30th November 2019 or while stocks last.

GEAR TALK

ZEPRO SEALING SYSTEM - IDENTIFICATION CHART



HIAB



ZEPRO

Nationwide Sales, Service & Parts

NORTH

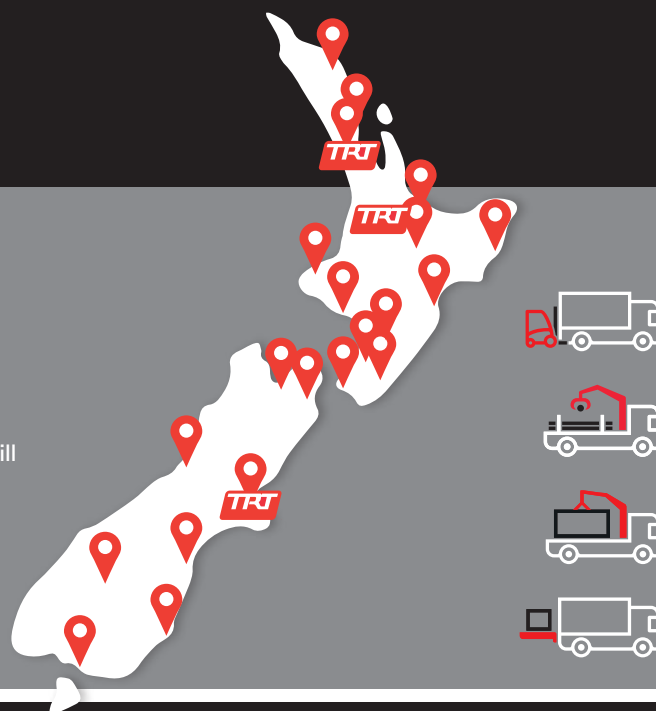
Whangarei
Warkworth
Auckland
Hamilton
Tauranga
Rotorua
Gisborne

New Plymouth
Napier
Whanganui
Palmerston North
Levin
Masterton
Wellington

SOUTH

Nelson
Blenheim
Greymouth
Christchurch
Timaru
Queenstown

Dunedin
Invercargill



**ZEPRO****HIAB**

Use the table below and the diagram to the left to help you identify which Zepro seal you need.

#	Part No.	Description	Qty
1	ZP20587TL	Aluminium profile 2.6m	1
2	ZP20588TL	Rubber profile outer 2	1
3	ZP20591TL	Rubber profile 2.6m	1
4	ZP20589TL	Rubber profile upper 2.6m	1
5	ZP21405TL	Rubber profile/m	1
6	ZP21394TL	Seal strip per m	1
7	ZP20283TL	Guide bar rubber 2.6m	1
8	ZP20289TL	Rail L = 2585	1

#	Part No.	Description	Qty
9	ZP20285TL	Rail Steel 2.6m	1
9	ZP20286TL	Rail Aluminium 2.6m	1
9	ZP20891TL	Rail for 21394 1.75m	1
10	ZP31193TL	Guide bar steel 2.6m	1
11	ZP22117TL	Alu. profile L=2600mm	1
12	ZP20158TL	Screw M8x20	13
22	ZP31542TL	Rubber profile outer/m	1
32	ZP31543TL	Rubber profile/m	1

**Sealing Rubber**

ZP21394TL

\$39.08
PER METRE

**Remote Control Pendant**

ZP22417TP

\$280.31

**Electric Motor 2kw 24volt**

ZP32207TL

\$1,037.94



Forestry, harvesting, spreading, tankers, stock trucks, access equipment and ag work - if your fleet travels off-highway for any reason, Traction Air CTI can improve your performance.

- Improve traction
- Reduce tyre wear
- Reduce damage to road surfaces
- Greater fuel efficiency
- Improve vehicle and driver safety

Match tyre pressure to load and road surfaces, all from the comfort of the cab!

**NEW**

MANAGING TYRE PRESSURE HAS NEVER BEEN EASIER, MORE ACCURATE OR SMARTER!



Prices shown exclude GST & freight and are valid from 1st October 2019 to 30th November 2019 or while stocks last.

www.trt.co.nz

In Gear | Oct - Nov 19

7

KAB//Seating

INSTALLATION - KAB 514C + KAB 524

This marine seat installation was completed by the team at TRT for our customer, Port Marlborough.

The 5 KAB seats, including a captain's chair, were installed on a Pilot Vessel Master. The marine seats range from KAB, with their heavy duty suspension, offer comfort and support during extreme weather conditions.



PARTNERS



Please note, franchises are exclusive by region. Enquire at your local branch.

CONTACT

For 24/7 Parts
Support Call Your
Nearest Branch



PARTS

Auckland

☎ 09 262 0683
📍 59 Ash Rd, Wiri, Manukau
✉ aklparts@trt.co.nz

Hamilton (Head Office)

☎ 07 849 4839
📍 48 Maui St, Te Rapa
✉ parts@trt.co.nz

Christchurch

☎ 03 741 2261
📍 6 Brydone Road, Hornby South
✉ ccparts@trt.co.nz

SERVICE & REPAIRS

☎ 07 849 4839 - 24/7 Call Out

SALES

Crane

Dean McIlroy
☎ 021 719 512
✉ deanm@trt.co.nz

Trailer

Glen Harnett
☎ 027 282 8090
✉ gharnett@trt.co.nz

Hiab / Zepro

Neil Annan - North Island
☎ 021 196 4358
✉ nannan@trt.co.nz

Barry Munro - South Island
☎ 021 288 3466
✉ bmunro@trt.co.nz