

# IN GEAR

TRT PARTS MAGAZINE

DECEMBER 2023 - JANUARY 2024

This Issue:

**HOT SUMMER DEALS:**

Chemtech Truck Wash,  
Stemco King Pin Sets,  
Meritor Clutch Kit.  
Sampa Air Bags

**TECH TALK:**

Understanding  
Hydraulics

**PLUS: Traction Air®**

CTI EM Series, Pilot  
Supreme Seat Special

**IN DEMAND:**

Jost Coupling  
Zepro Remote  
Sampa Exhaust  
Flexi Tube



**TRT.**  
MADE  
POSSIBLE



PROUDLY NEW ZEALAND  
OWNED & OPERATED



# UPDATE FROM GAVIN HALLEY

# TRT PARTS

As the year winds down, we at TRT are taking a moment to reflect on what we've achieved over the last year. It's been a year filled with obstacles, change, and many victories. Our leading products have continued to be in high demand, and our service and parts business units have seen similar positive trends.

A notable event this year for TRT was the major change in ownership, 56 years since Jack Tidd Ross Todd was formed. TRT's Engineering and Technical Director, Robert Carden decided to step down from his position and sell his shares of the business. Robert's brother, Bruce Carden, and his family acquired Robert's shares in the business. This change wasn't merely a shift in leadership; but most importantly to maintain TRT's company values and dedication to customer solutions.

Throughout the year, we've improved our products and services significantly. Glen Harnett has taken up the role of GM of Capital goods, and Jeremy Carden has stepped into trailer sales to bolster this area. We've expanded our Hiab support network, adding sales representatives and a new dealer technical support desk, covering both main islands.

Our Zepro services have also grown, with sales now managed by our territory managers and a reinforced inventory. Moreover, we unveiled the TIDD PC28-3G Pick and Carry Crane powered by the Cummins Euro 6 ISB6.7 Engine, highest emission control diesel engine available. We have also installed solar panels on two of our manufacturing sheds at our head office in Hamilton, New Zealand. These efforts are just a glimpse of our dedication to reducing our carbon footprint, saving energy, and reducing on-site emissions.

As we move into the holiday season it is a time for celebration and reflection, for enjoying Christmas warmth and looking forward to the New Year's potential. It reminds us of our innovative spirit and teamwork at TRT. We hope this season brings joy, peace, and prosperity to all and their families. We're deeply thankful to our customers for their trust and support. Your loyalty drives our innovation and service, and we value our relationship with you.

Thank you for sticking with us this year. We also appreciate our staff's hard work and creativity. Your dedication is the foundation of our success, and we're grateful for your contributions. As we say goodbye to this year, we carry the strength, unity, and innovative spirit that defined us into the New Year, ready for what's to come.

Warmest wishes for a Merry Christmas and a prosperous New Year.

Gavin Halley  
General Manager Sales



## PARTNERS IN YOUR SUCCESS

We Know What It Takes



## EXTENSIVE RANGE

What We Don't Stock,  
We'll Source



## EXPERTS IN OUR FIELD

We Can Solve It



## KEEP YOU MOVING

Right Part, On Time

## WHAT'S HAPPENING



On the cover: TRT's new Traction Air® CTI EM series recently installed on a Western Star 8 x 4 logger, with a little xmas cheer! You can read more about the new Traction Air® system on page 6.



The Hamilton CTI team recently installed our new Traction Air® EM Series system onto two McCarthy Transport's (Wanganui) Western Star 8x4 log trucks. The new Traction Air® EM series was just launched in November, and will be rolled out across all new installations moving forward.



In October the TRT team attended the Crane Industry Council of Australia (CICA) conference in Perth. This is the biggest crane conference in Australasia - where companies involved in anything cranes get to strut their stuff and make new customer connections. Our stand looked the goods and highlighted our crane agencies plus our manufacturing prowess. It was also the setting for TRT's new TIDD PC28-3G Pick and Carry Crane launch. The event generated a lot of interest in the new TIDD plus our other manufactured goods overall - and we look forward to seeing some great results from the TRT team flying the flag in Australia.

# HOT DEALS

## HOT SUMMER DEALS!

Save  
**20%**  
Across the  
Range



## STEMCO KING PIN SETS

HUGE RANGE FOR MANY  
APPLICATIONS!

## CHEMTECH TRUCK WASH 20L

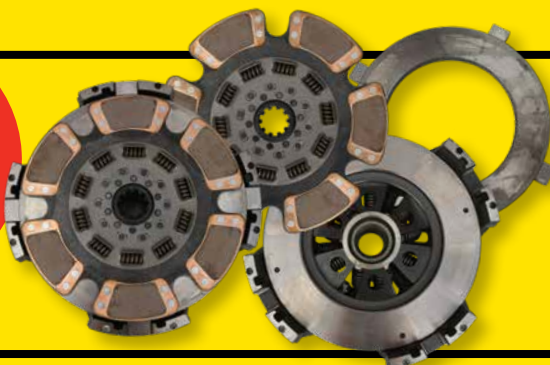
CT1820L

**\$115.00**  
EA

HOT  
PRICE



Save  
**20%**



## MERITOR CLUTCH KIT

RWMAF10839193H

**\$1480.00**  
EA

MANN+  
HUMMEL



Save  
**30%**

Large range of  
European Truck  
Filters in Stock!

Save  
**25%**



## TRT DG Hazard Flip Sign class 1-9

AMFLIPSIGN-TRT

**\$100.00**  
EA

Save  
**30%**



## Sampa Torque Rod Pin & Bush Kit TO SUIT REYCO 21B SA501437

**\$33.00**  
EA

Save  
**25%**



## Sampa Airbag TO SUIT ROR FLEXAIR 9000 SUSPENSION SASP554157KP05

**\$135.00**  
EA



trt.co.nz

\*Prices shown exclude GST & freight and are valid from 1st December 2023 to 31st January 2024 or while stocks last. No further trade discounts apply to deals shown.

In Gear | December 2023 - January 2024 **3**



# TECH TALK: Basic Hydraulic System

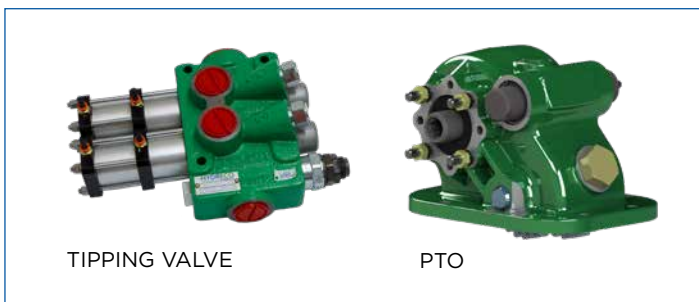
**Hydraulics is a specialised area and can be very complex and very dangerous if done incorrectly - but it can be understood at a basic level, and hopefully demystified a little in this month's Tech Talk**



## BASIC HYDRAULIC SYSTEM

**In Tech Talk we will cover the basic operation of a hydraulic system, what basic components you need and how these work together to tip a 20-ton load of grain or lift a 2-ton pallet.**

The basic hydraulic system is a closed loop with only a few main components - a reservoir, oil, filter, pump, control valve and cylinder. The more complex the end operation the more control valves and cylinders you need. A Hiab crane is much more complex than a tipping truck, but the basic principles are the same.



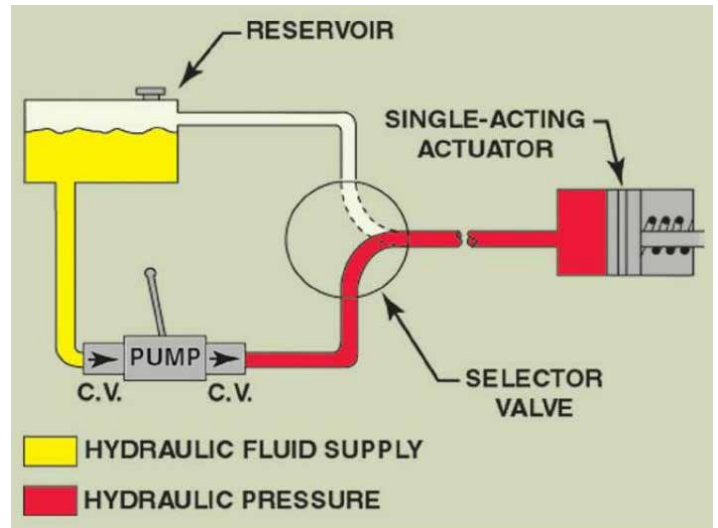
If we look at a tipping truck as an example, we will start in the cab with the component that gets the most attention from the operator and controls what happens with the system, this manual control (either air or electric) controls the Power Take Off (P.T.O) and what happens to the Hydraulic Cylinder.

The PTO is basically a unit of gears that connect to the gearbox (or engine) and transfers that rotation to the Pump at the ideal ratio for the bin to lift at a steady pace. Too fast and the vehicle could end up on its side and too slow time and money is wasted.

The PTO connects to the pump either directly or via a driveshaft. This pump could be a gear, vane, or Piston type, and this will convert the mechanical energy to the hydraulic oil, and this provides the pressure and the power necessary to move the cylinder and raise the bin.

**The hydraulic oil moves from the tank to the pump then travels through the pressure lines to the control valve that the operator also controls from the cab.**

In our example we are wanting to raise the bin so, the control valve diverts the oil to the ram and fills the cylinder/stage and then the next stage etc. until the bin is fully in the air, after the contents of the bin have emptied, the operator now changes the direction of the flow through the control valve and the oil drains from the Ram through the valve to the Filter and back to the tank.



The most important part of the system is the filter and is the cause of around 90% of all system failures, this needs to be checked regularly, there is no set time frame for replacement as this is depending on several factors, so we recommend that you check it often, you can never check it too much.

**The team at TRT can supply you with all these components to suit your needs, please contact your local branch and they will help you through the process and ensure you have the correct gear for your application so you can use your Hiab or tip your load, we are here to help you make it possible.**

**IN DEMAND**

## Remanufactured BPW Steer Axle Range

Ask about our range of reman steer axles to suit your requirements.  
BWSTEER



## Jost Ball-Race

JTKDR4200010K



**JOST**

**\$1995.00**  
EA

## Sampa Exhaust flexi tube

TRT Stock a wide range of exhaust products. talk to us today about any of your exhaust requirements



## Zepro Remote

ZP22417TL



**\$290.00**  
EA

**ZEPRO**

## Genuine Zepro Tilt Cylinder

ZP67269TL



**\$1415.00**  
EA

## Jost 50mm Coupling

JTRK500B66500

**JOST**



**\$1395.00**  
EA

## Jost Modul Landing Legs

TRT Stock a wide range of different sizes and types of landing legs.

**JOST**



[trt.co.nz](http://trt.co.nz)

\*Prices shown exclude GST & freight and are valid from 1st December 2023 to 31st January 2024 or while stocks last. No further trade discounts apply to deals shown.

In Gear | December 2023 - January 2024 **5**



# GET A GRIP GET MOVING GET TRACTION AIR®

TRT introduces the  
new Traction Air®  
CTI EM series

## IMPROVED DESIGN:

The new EM Series features a simplified and improved manifold design that optimises airflow and improves pressure distribution. This enables the system to perform more efficiently, delivering improved responsiveness for traction.

## SIMPLIFIED INSTALLATION:

The innovative pressure cell's design is 50% more compact than the existing model, allowing for enhanced installation flexibility in tight spaces. This simplicity ensures that our system can be seamlessly integrated into a vehicle, regardless of its size or configuration.

## ROBUST, LIGHTWEIGHT PROTECTION:

The new EM Series pressure cell is housed in a robust yet lightweight cover, providing the necessary protection against environmental elements without adding unnecessary weight to your vehicle.

**TRT** MADE  
POSSIBLE



**JONSERED** Materials handling / metal recycling cranes, various configurations available.

**MULTILIFT** Roll-on Roll-off skip handling units with 18-30 tonne capacity options.

 **JONSERED**  **MULTILIFT**

For all Hiab, Jonsered and Multilift enquiries contact:  
North Island: **Andrew Farrell**: 021 591 049 e: [andrewf@trt.co.nz](mailto:andrewf@trt.co.nz)  
South Island: **Matthew Tabb**: 021 755 263 e: [mattt@trt.co.nz](mailto:mattt@trt.co.nz)

 **HIAB**

\*Prices shown exclude GST & freight and are valid from 1st December 2023 to 31st January 2024 or while stocks last. No further trade discounts apply to deals shown.

6 In Gear | December 2023 - January 2024

[trt.co.nz](http://trt.co.nz)





## IN FOCUS / MERITOR RED RANGE

### MERITOR RED RANGE

#### SPRING BRAKES, BRAKE CHAMBERS, SLACK ADJUSTERS & BRAKE DRUMS

Meritor is the global braking leader both in size and capability for the commercial vehicle industry, supplying braking systems for trucks, trailers, buses and coaches. Meritor are market- leaders through the applications of advanced predictive techniques and innovative manufacturing processes. TRT carry a comprehensive catalogue of the Meritor Red Range.



## BUILT TO **PERFORM**

With ZEPRO tail lifts, quality is never compromised. ZEPRO's flexible and accurate handling makes lifting and moving smooth and controlled, keeping goods safe and delivered with precision. It will assist the driver to maximise uptime and work in a safe and effective way, regardless of your operation or environment. Keep your tail lift running and minimise downtime with genuine ZEPRO parts from TRT.

**Maintain your tail lift performance and safety. Talk to your TRT rep about ZEPRO unit and parts options today.**



\*Prices shown exclude GST & freight and are valid from 1st December 2023 to 31st January 2024 or while stocks last. No further trade discounts apply to deals shown.

In Gear | December 2023 - January 2024 **7**

# SEAT SPECIAL: PILOT SUPREME



**\$2295**  
+GST  
SAVE OVER  
30%!

- Air suspension with operator rating of 150kg
- Adjustable damper
- Triple air lumbar
- Integrated 3-point safety belt

**CONTACT  
OUR SEAT  
EXPERTS  
TODAY!**

**Suitable replacement for ISRI  
6800/337 and Isuzu, Hino, Scania,  
MAN, Iveco, DAF, Kenworth, Mack  
and International**

## OUR PARTS PARTNERS

**IVECO**

**FREIGHTLINER**

**Mercedes-Benz**

**JOST**

**ROCKINGER**

**MERITOR**

**TRACTION  
AIR**

**HIAB**

**ZEPRO**

**EATON  
Roadranger**

**STEMCO**  
A Higher Standard of Performance™

**HYDRECO  
POWERTO**

**SPICER**  
DANA

**BP  
LUBRICATION**

**FRASLE**

**HENDRICKSON**

**HELLA**

**AdBlue**

**KAB // Seating**

**Bostrom**  
SEATING

**KOBELCO**

**Manitowoc**

**GROVE**

**POTAIN**

**SAMPA**

**Fleetguard**

**ASHTREE**  
VISION & SAFETY

**ALLIANCE  
TRUCK PARTS**

Please note, franchises are exclusive by region.  
Enquire at your local branch.

## CONTACT

**FOR 24/7  
PARTS  
SUPPORT CALL  
YOUR NEAREST  
BRANCH**



### PARTS Auckland

☎ 09 262 0683  
☎ 027 2881 660  
📍 59 Ash Rd, Wiri, Manukau  
✉ aklparts@trt.co.nz

### Hamilton (Head Office)

☎ 07 849 4839  
☎ 027 6363 362  
📍 48 Maui St, Te Rapa  
✉ parts@trt.co.nz

### Christchurch

☎ 03 741 2261  
☎ 021 197 5807  
📍 6 Brydone Road, Hornby South  
✉ ccparts@trt.co.nz

### SERVICE & REPAIRS

☎ 07 849 4839 - 24/7 Call Out

### SALES Crane

Jordan Hutchinson - Crane Sales  
☎ 021 241 6205  
✉ jordinh@trt.co.nz

### Crane Parts & Service

Elton Petersen - Crane Service  
☎ 021 088 74742  
✉ eltonp@trt.co.nz

### Trailers

Jeremy Carden  
☎ 027 354 0329  
✉ jeremyc@trt.co.nz

### Hiab

Andrew Farrell - North Island  
☎ 021 591 049  
✉ hiab@trt.co.nz

Matt Tabb - South Island  
☎ 021 755 263  
✉ mattt@trt.co.nz

### Traction Air

Matt Counihan  
☎ 027 477 7383  
✉ matthewc@trt.co.nz

**trt.co.nz**