

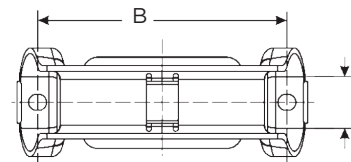
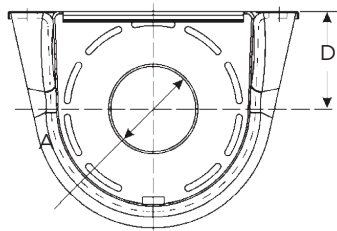
TRT MADE POSSIBLE

HANGER BEARINGS

HANGER BEARINGS



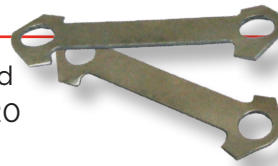
Part No.	Bearing I.D.	Hole Centre	Series	Rubber
212088-1X	1.378	6.625	1310	Slot
210866-1X	1.574	6.620	1410	Slot
210084-2X	1.771	7.620	1610	Slot
210121-1X	1.968	7.620	1710	Slot
210661-1X	2.362	8.620	1810	Slot
50033-23xB	2.362	8.622	1810-SPL250	Slot
50033-26xB	2.362	8.622	1810-SP250	Solid



LOCKS BOLTS & STRAPS



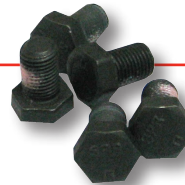
RPL Ferry head capscrew 1/2"-20 CS82052



TAB Lock 17-1810 230323



HR Strap Kit Std 1710/1810 6.5-70-18X

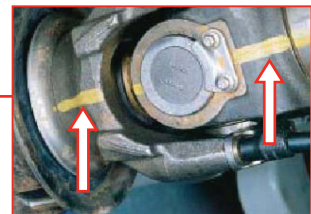


Bolt Serrated 673209

HR 1710/1810 212214X

REMOVAL AND REASSEMBLY

- **Do not reuse** bearing plate bolts.
- If removing the driveshaft to send to TRT mark all mating driveshaft components before disassembly with a paint marker to assure proper phasing during reassembly. Failure to ensure correct phasing on reassembly may result in vibration and damage to the drive shaft.
- When installing your TRT repaired driveshaft use a recommended grease to purge all 4 seals of each universal joint to assure proper filling of each bearing. Make sure fresh grease is evident at **all** U-joint bearing seals.



Shaft marked prior to disassembly

