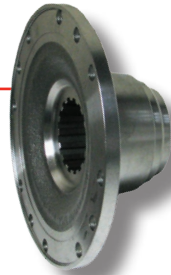


COMPANION FLANGE

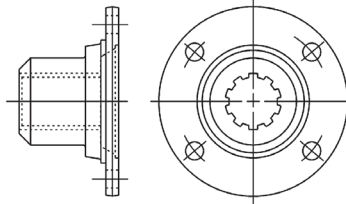
COMPANION FLANGE
(Centre Digit 1)



European Style KV Flange

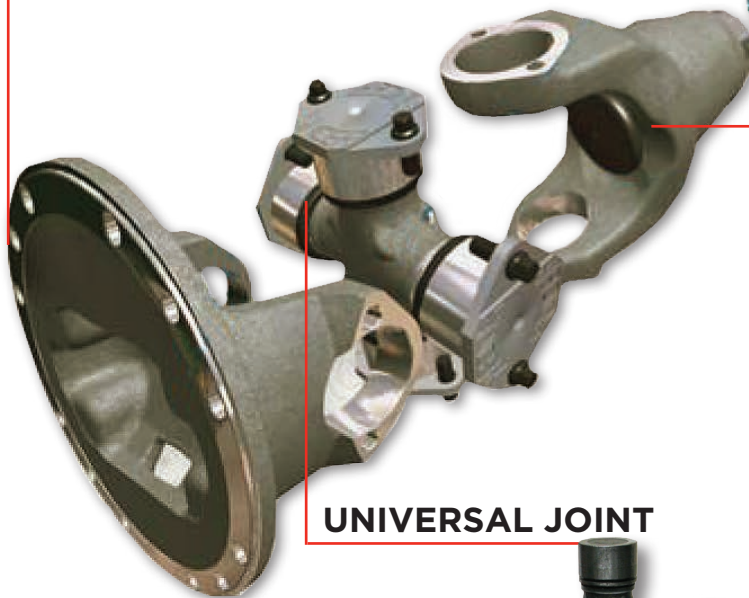
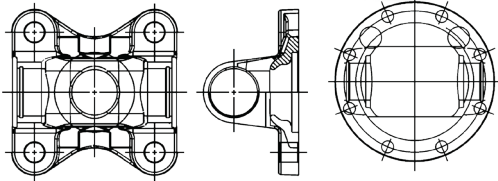
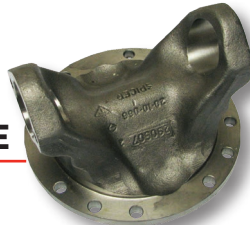


SAE Style



FLANGE YOKE

FLANGE YOKE
(Centre Digit 2)

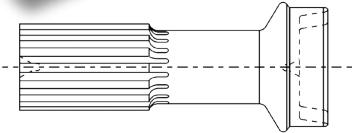


UNIVERSAL JOINT



SLIP STUB

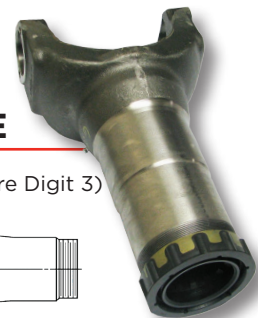
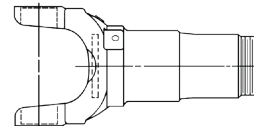
(Centre Digit 40,
42)



SLIP STUB SHAFTS
(Centre Digit 40 or 42)

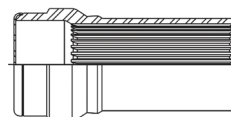
SLIP YOKE

SLIP YOKE (Centre Digit 3)



MID SHIP SLEEVE

SPLINED SLEEVE (Centre Digit 55)



TRT MADE POSSIBLE

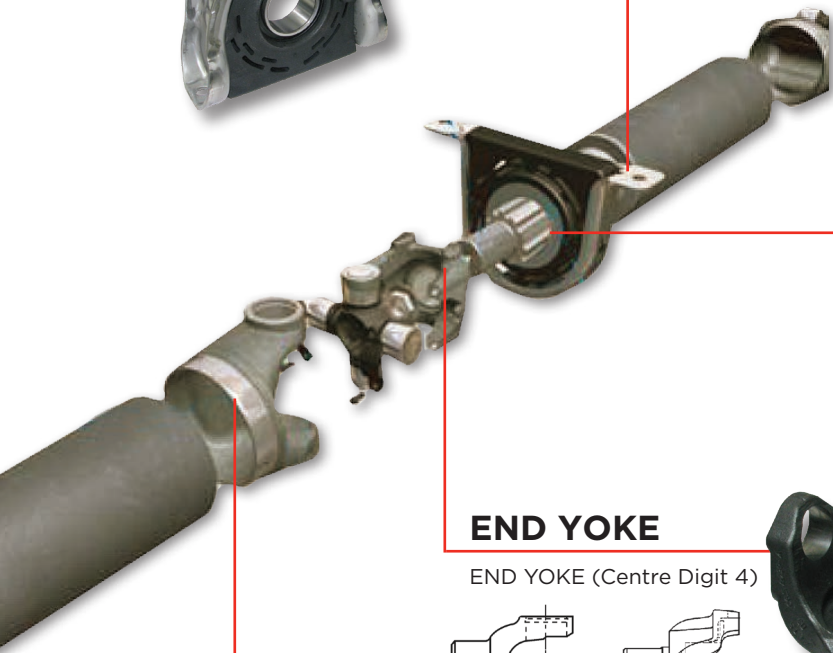
DRIVESHAFT COMPONENTS



HANGER BEARING

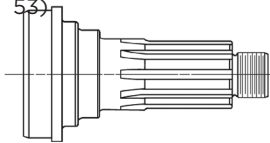


Spicer life



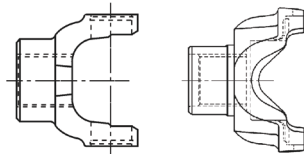
MID SHIP STUB

MID SHIP STUB (Centre Digit 53)



END YOKE

END YOKE (Centre Digit 4)

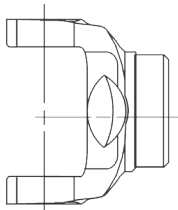


SPLINED BAR



WELD YOKE

WELD YOKE (Centre Digit 26 - 28)

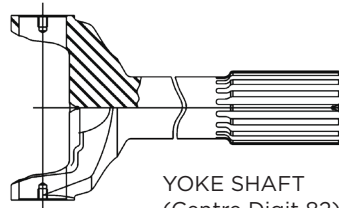


TUBE YOKES (Centre Digit 26)

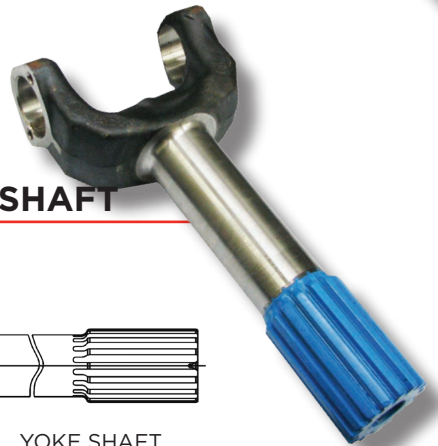


RPL Yoke

YOKE SHAFT



YOKE SHAFT (Centre Digit 82)



Mid ship Flange Assy

NOTE

The centre digit numbers above refer to Dana Spicer Part Number Structure where a part is identified by series and then type E.g. 6-2-479 = 1710 Series Flange Yoke.