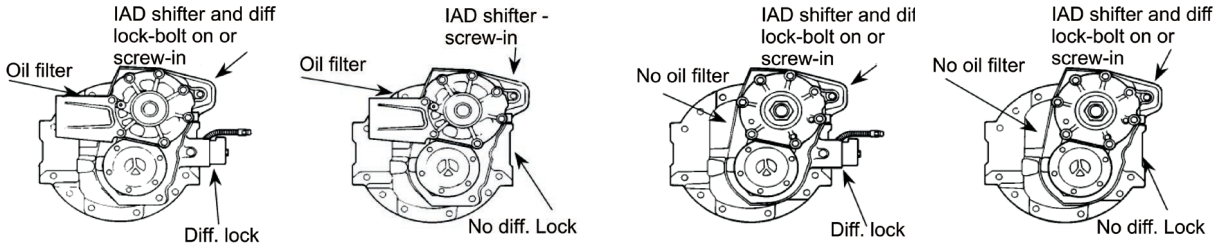
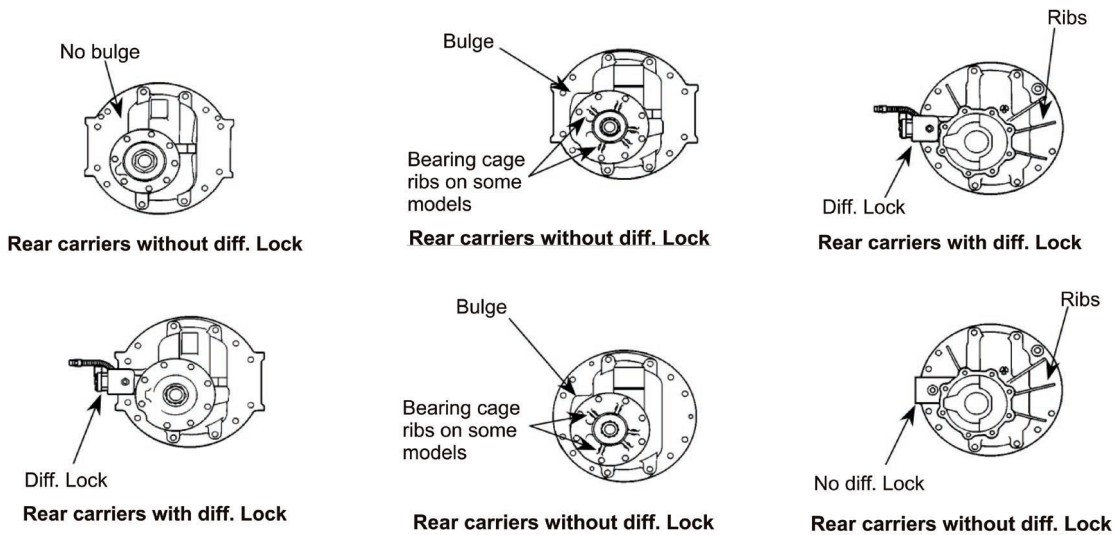


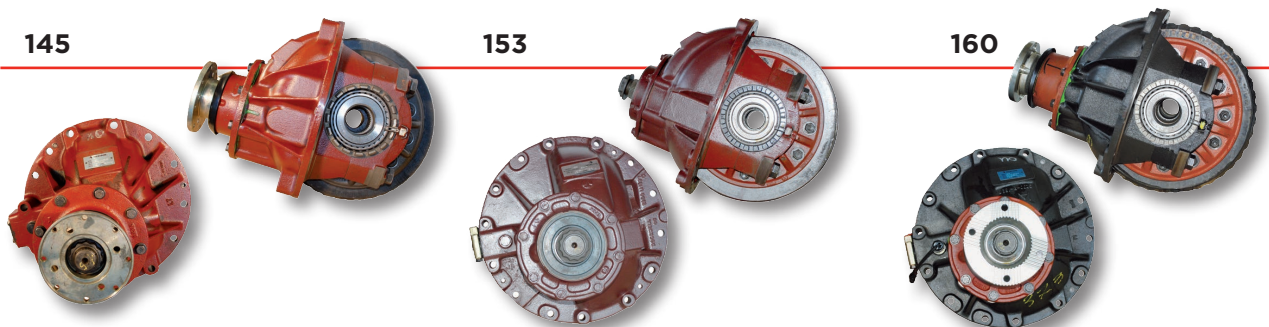
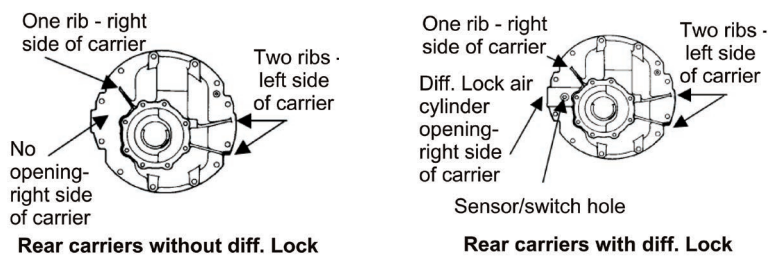
145 & 160 SERIES FORWARD CARRIERS



145 SERIES SINGLE & REAR CARRIERS



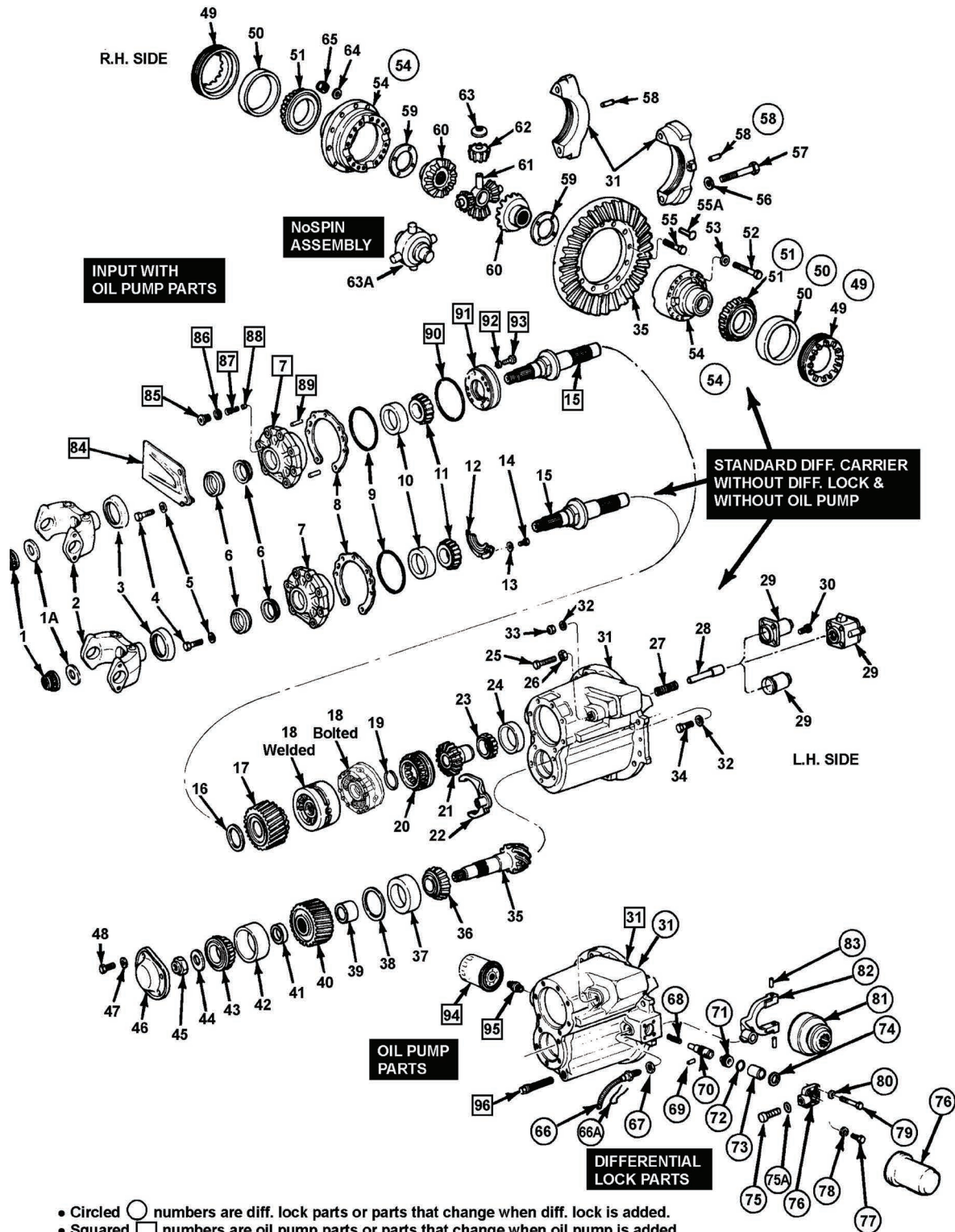
160 SERIES SINGLE & REAR CARRIERS



TRT MADE POSSIBLE

MERITOR 145 -160

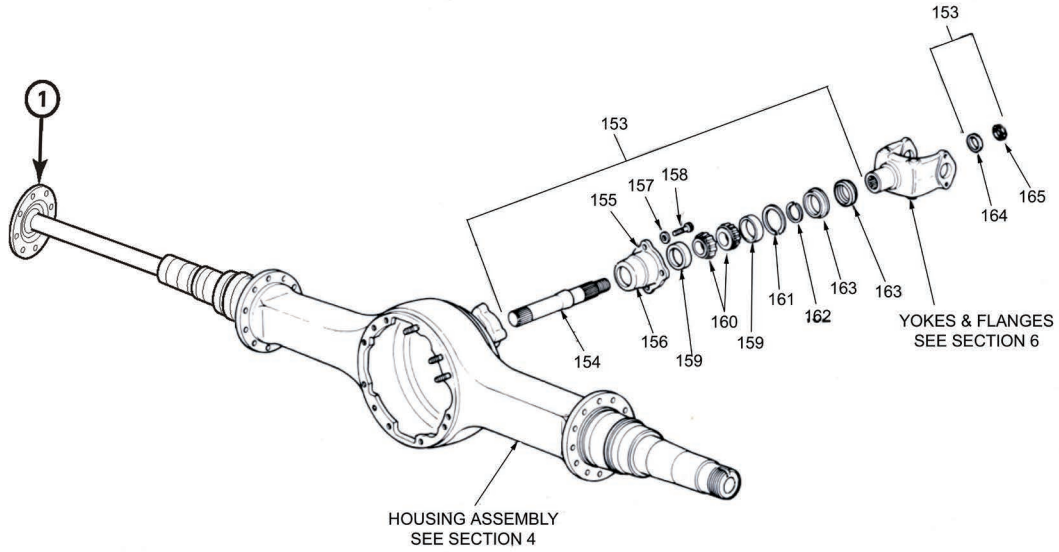
FORWARD CARRIERS RT145 - 160



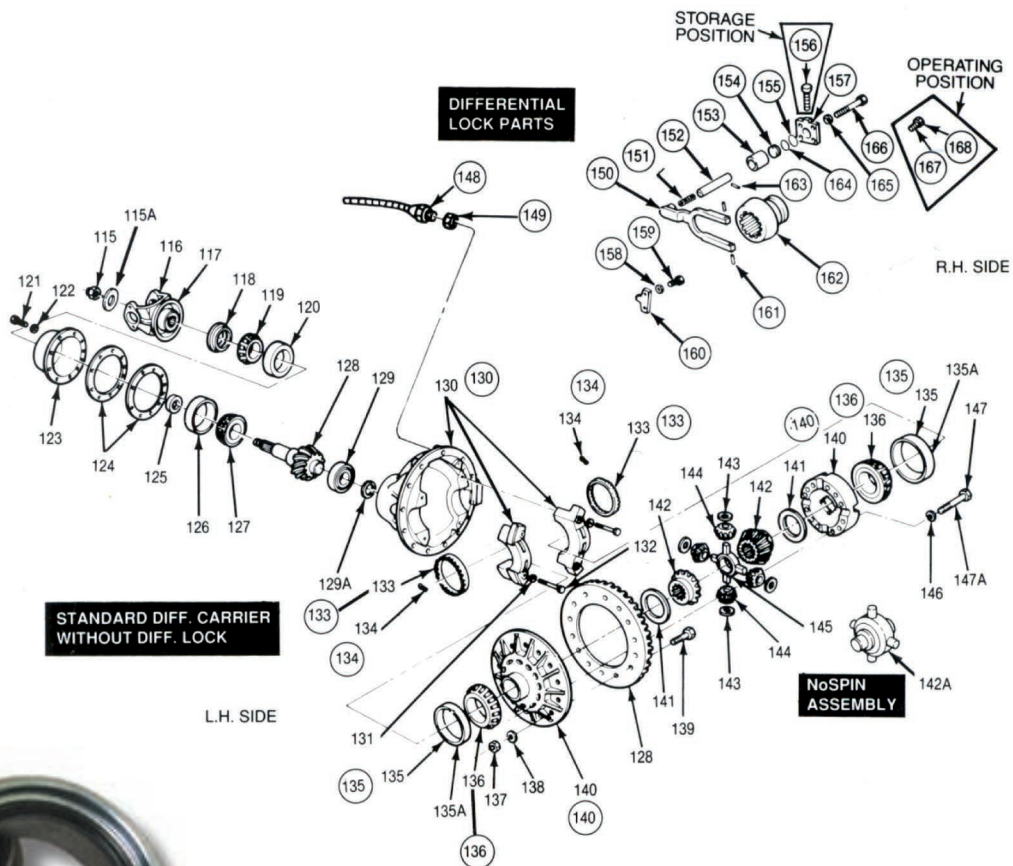
TRT MADE POSSIBLE

MERITOR 145 -160

RT145-160 THRU SHAFT



RT145-160 CARRIERS FOR SINGLE AXLES AND REAR TANDEM AXLES

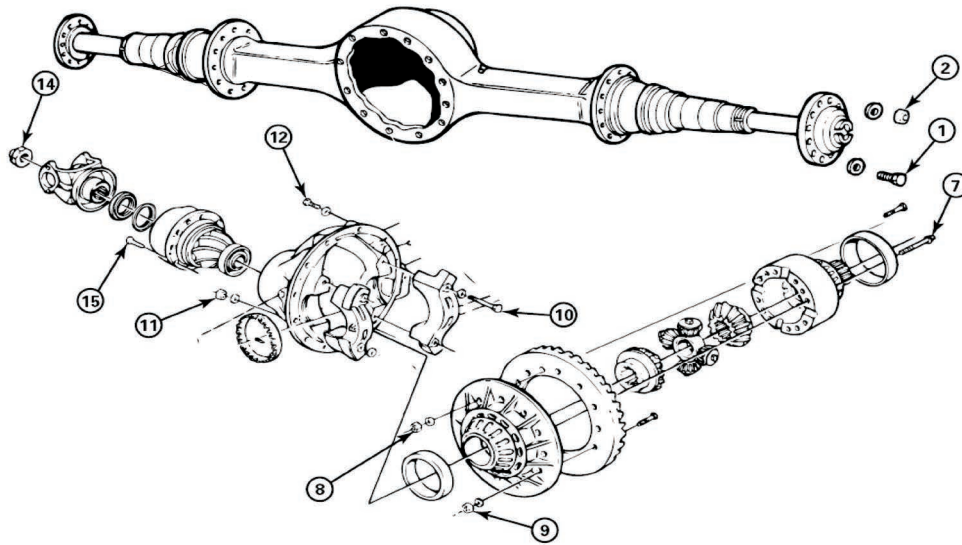


Input/Output Shaft Seals

Model	Position	Seal Part No
RT-40-145	Forward input	A11205X2728
RT-46-160	Forward output (thru shaft)	A11205Y2729
	Rear input	A11205A2731

TRT MADE POSSIBLE MERITOR RT 145-160

RT145-160 FASTENER TORQUE SETTINGS

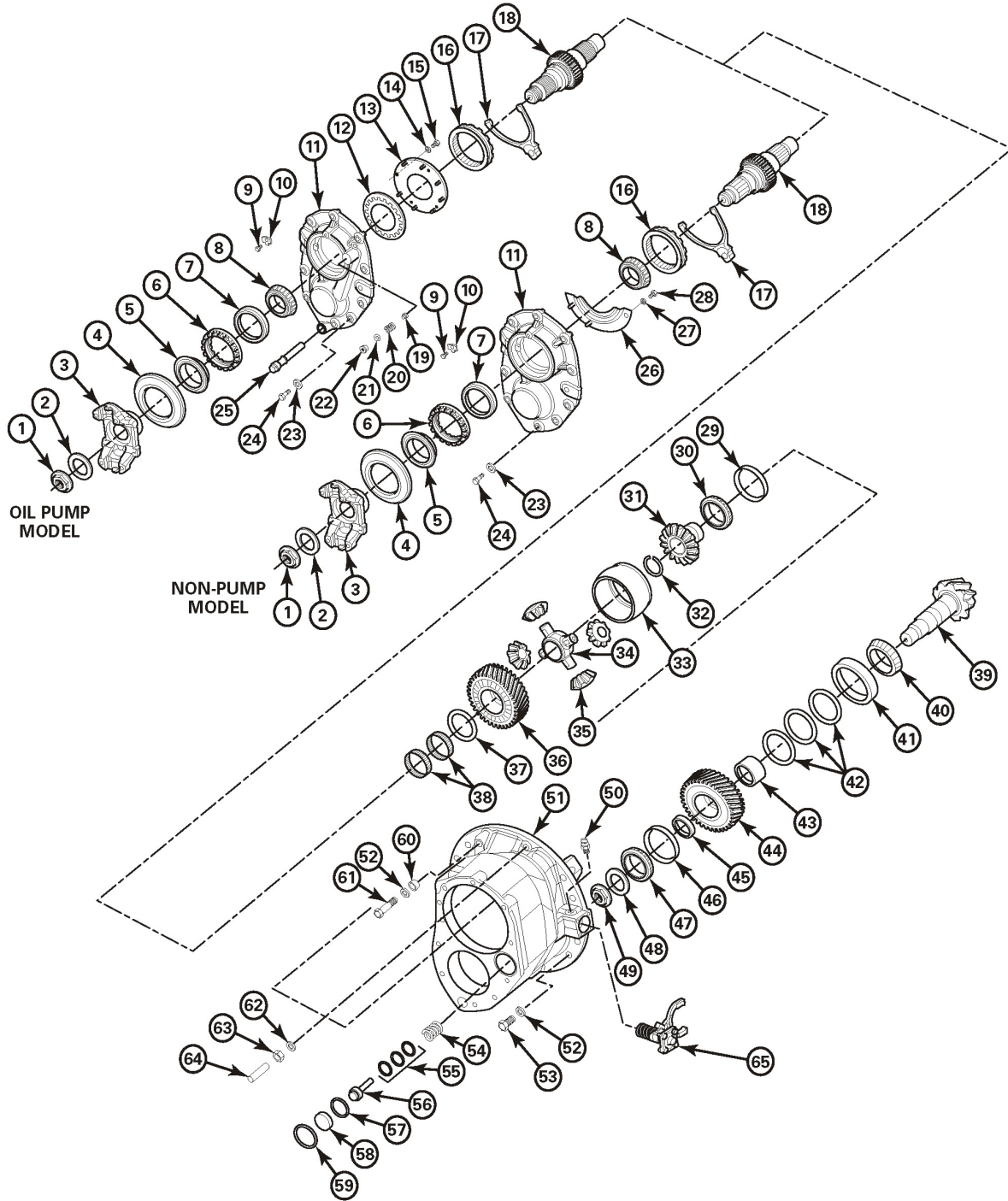


No.	Description	Thread Size	Nm	No.	Description	Thread Size	Nm
1	Capscrew, Axle Shaft	.31-24	24-33	10	Capscrew, Bearing Cap	.56-12	149-197
		.50-13	115-156			.62-11	203-258
2	Nut, Axle Shaft Stud	Plain Nut	68-102			.75-10	366-475
		.44-20	102-156			.88-14	488-637
		.50-20	149-224			.88-9	576-746
		.56-18	203-312			M16 x 2	245-300
		.62-18				M20 x 2.5	470-585
		Lock Nut	54-88			M22 x 2.5	650-810
		.44-20	88-136				
.50-20	136-197						
7	Capscrew, Differential Case	.56-18	176-258	11	Nut, Housing to Carrier Stud	.44-20	68-102
		.62-18				.50-20	102-156
		Grade 10.9 Flange Head	M12 x 1.75	115-140	.56-18	149-224	
			M12 x 1.75	100-130	.62-18	203-312	
			M12 x 1.75	143-169			
			M16 x 2	275-340			
			M16 x 2	300-420			
Grade 12.9 Standard Head	M16 x 2	300-420	12	Capscrew, Carrier to Housing	.44-14	68-102	
		.50-13			102-156		
8	Nut, Differential Case Bolt	.50-13	102-136	.56-12	149-224		
		.50-20	115-156	.62-11	203-312		
		.62-11	203-258	.62-11	203-312		
		.62-18	244-312	.75-10	366-542		
		M12 x 1.75	100-130	M12 x 1.75	100-120		
		M16 x 2	300-420	M16 x 2	245-300		
9	Nut, Ring Gear Bolt	.50-13	102-136	14	Input Yoke-to-Input Shaft Nut	Refer to Table K	
		.50-20	115-156			15	Capscrew, Bearing Cage
		.62-11	203-258	.44-14	68-102		
		.62-18	244-312	.50-13	102-156		
		M2 X 1.25	90-110	.56-12	149-224		
		M2 x 1.75	104-115	.62-11	203-312		
		Flange Head	M16 x 1.5	260-190	M12 x 1.75	90-150	
Standard Hex Head	M16 x 1.5	265-355					

WARNING

This is a "quick reference guide" only. Always refer to manufacturer's instructions.

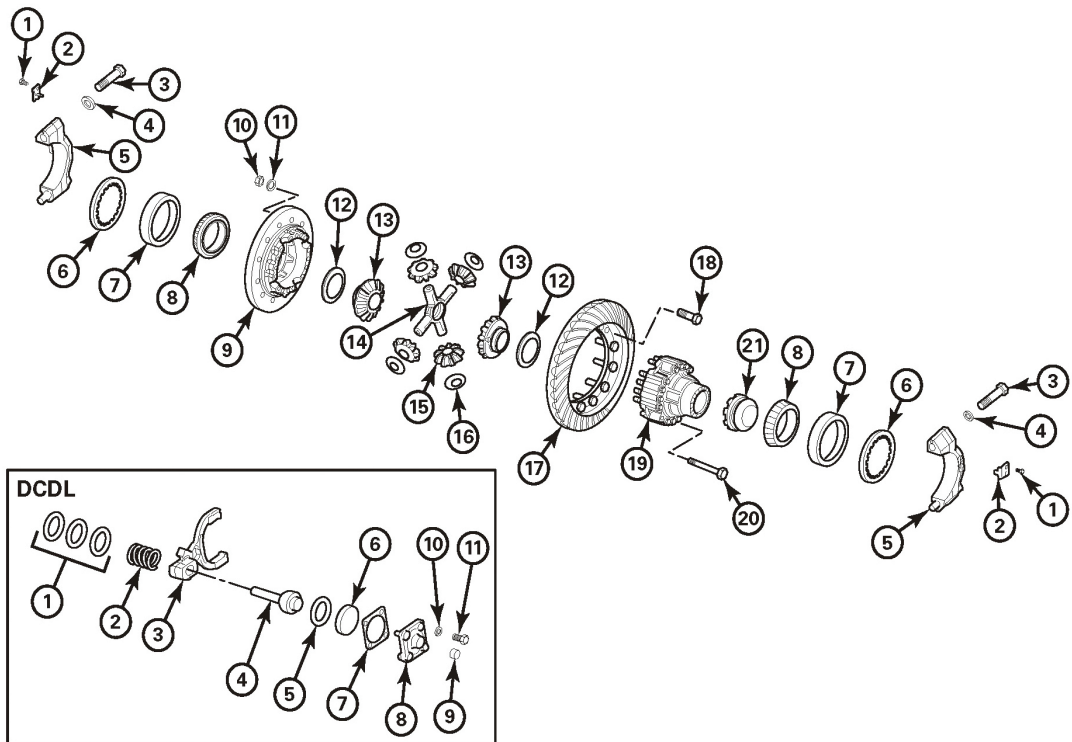
MT-14X SERIES DIFFERENTIAL CARRIER



Input/Output Shaft Seals

Model	Position	Seal Part No
MT-14X	Forward input	A11205X2728
	Forward output (thru shaft)	A11205Y2729
	Rear input	A11205Z2730

MAIN DIFFERENTIAL CASE & RING GEAR ASSEMBLY



AXLE HOUSING WITH THRU-SHAFT

