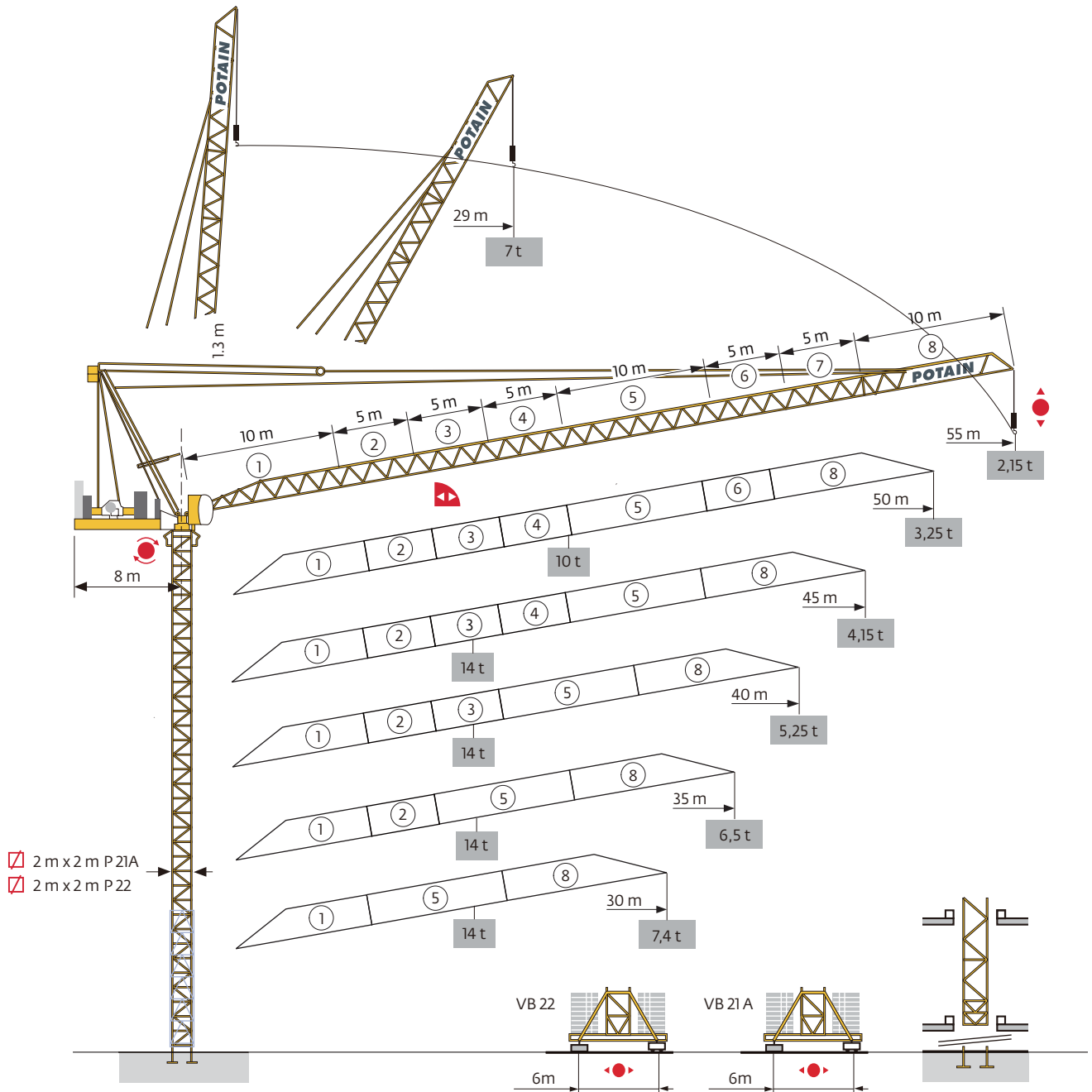
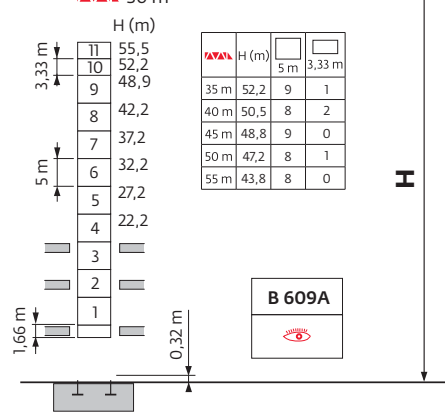
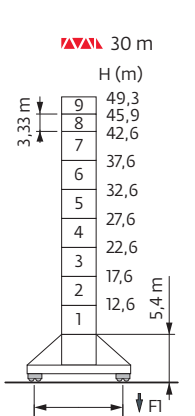
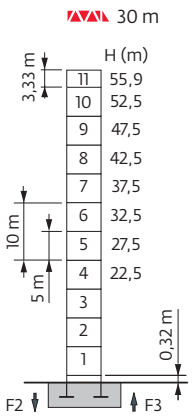
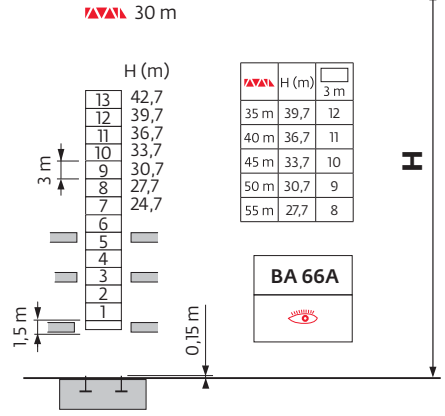
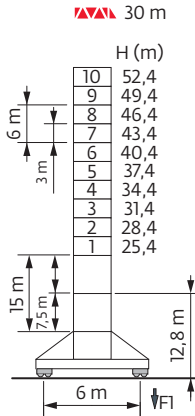
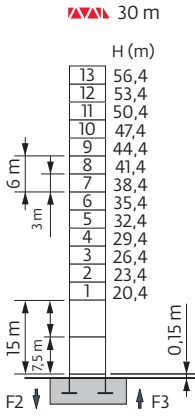


Potain MCR 225A

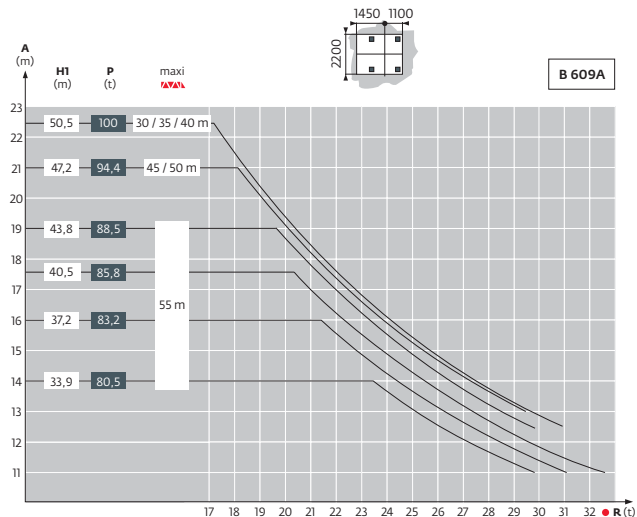
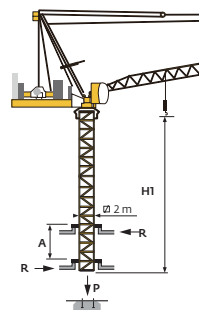
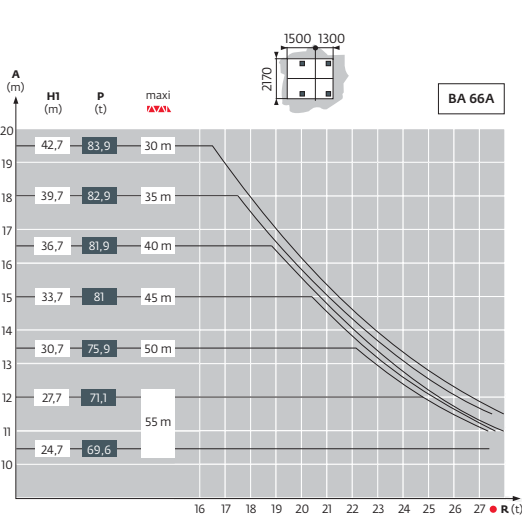


Mât - Réactions / Mast - Reaktionskräfte / Mast - Reactions / Mástil - Reacciones / Torre - Reazioni
 Tramo - Reações / Реакция опор мачты

2 m



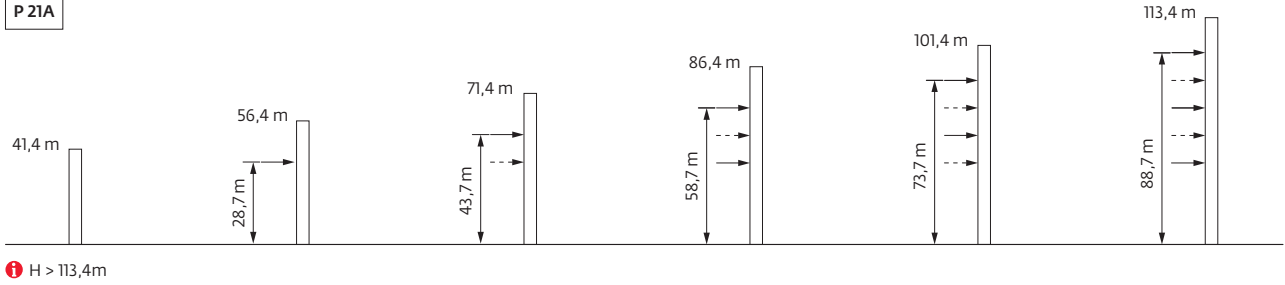
Télescopage sur dalles / Kletterkrane im Gebäude / Climbing Crane / Telescopage grua trepadora / Gru in cavedio
 Telescopagem sobre lages / Кран, ползущий внутри здания



Ancrages / Verankerungen / Anchorages / Anclajes / Ancoraggi
 Ancoragem / Анкера

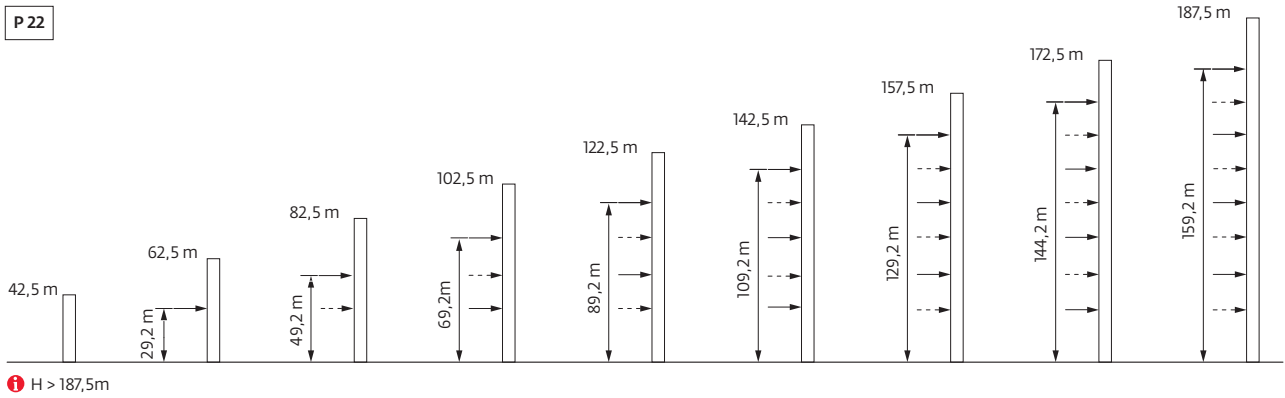
55 m

P 21A



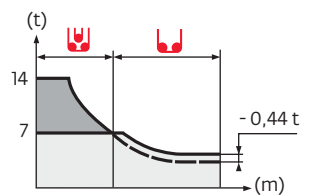
55 m

P 22



Courbes de charges / Lastkurven / Load curves / Curvas de cargas / Curve di carico
 Curvas de carga / Кривые нагрузок

55 m	4,4	▶					29	30	32	35	37	40	42	45	47	50	52	55	m	
							7	6,9	6,3	5,4	4,9	4,3	3,9	3,4	3,1	2,7	2,45	2,15	t	
50 m	4	▶					23,7	25	27	30	32	35	36,6	38,5	40	42	45	47	50	m
							10	9,3	8,3	7	6,3	5,4	5	4,7	4,3	3,7	3,4	3		t
										7	6,1	-	-	4,9	4,5	4	3,7	3,25		t
45 m	3,7	▶					18,7	20	22	25	27	30,5	31,8	32,5	35	37	40	42	45	m
							14	12,8	11,3	9,4	8,4	7	-	6	5,5	4,8	4,4	3,9		t
												7	6,3	5,8	5,1	4,7	4,15			t
40 m	3,3	▶					18,8	20	22	25	27	30	31	32,3	33,1	35	37	40		m
							14	13	11,4	9,6	8,6	7,4	7	-	6,2	5,7	5			t
													7	6,5	6	5,25				t
35 m	3	▶					18,8	20	22	25	27	30	31,2	32,6	33,4	35				m
							14	13	11,4	9,6	8,6	7,4	7	-	6,2					t
													7	6,5						t
30 m	2,6	▶					18,8	20	22	25	27	30								m
							14	13	11,4	9,7	8,7	7,4								t
													7							t

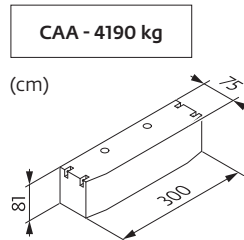


Lest de base / Grundballast / Base ballast / Lastre de base / Zavorra di base
 Lastro da base / Базовый Балласт

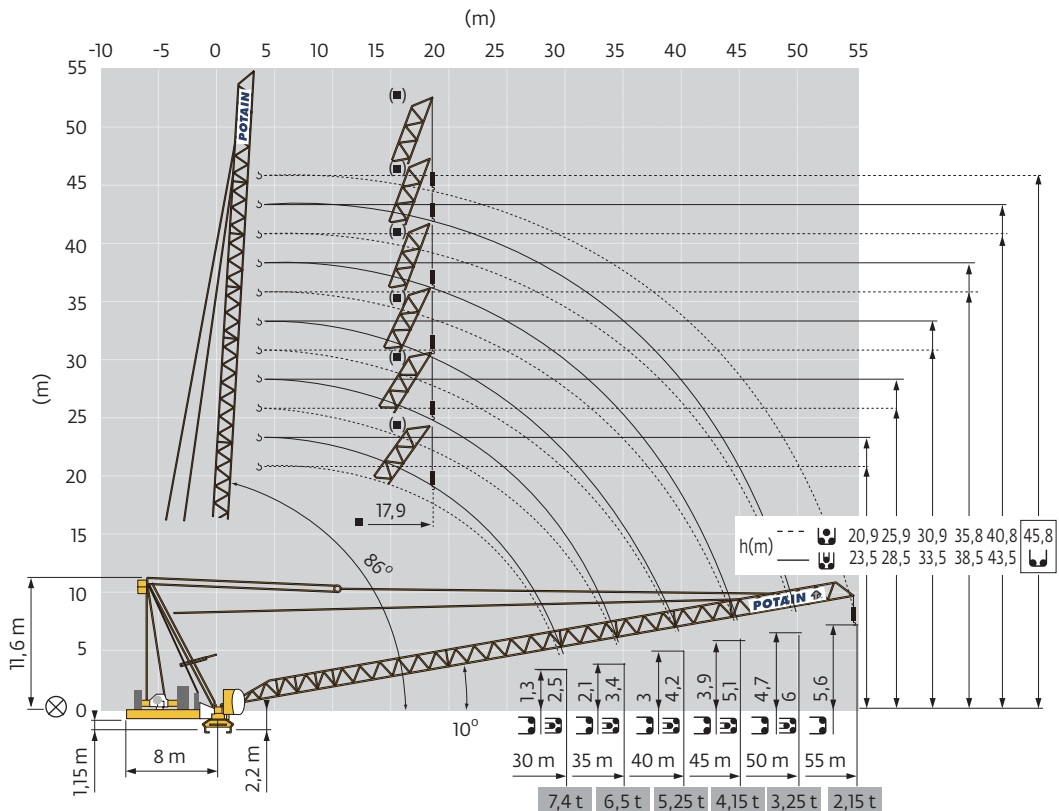
2 m			2 m		
VB 21 A			VB 22		
▼▲▲	H (m)	⚖️ (t)	▼▲▲	H (m)	⚖️ (t)
30 m	56	132	30 m	49,3	132
35 m	52,6	132	35 m	47,6	132
40 m	49,3	132	40 m	44,3	132
45 m	46	132	45 m	40,9	132
50 m	42,6	132	50 m	39,3	132
55 m	39,3	132	55 m	35,9	132

Lest de contre-flèche / Gegenauslegerballast / Counter-jib ballast / Lastre de contra-flecha / Zavorra di controbraccio
 Lastro da contra lança / Противовес стрелы

▼▲▲	4190 kg	⚖️ (kg)
55 m	4	16 760
50 m	4	16 760
45 m	4	16 760
40 m	4	16 760
35 m	4	16 760
30 m	4	16 760



Flèche relevée / Ausleger in Steilstellung / Luffing jib / Flecha izada / Braccio impennato
 Lança inclinada / Маховая стрела




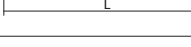

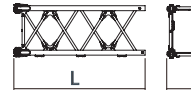





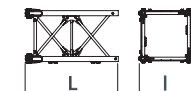





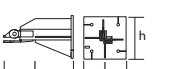
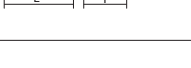
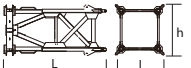
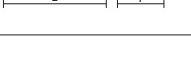
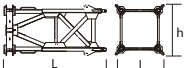
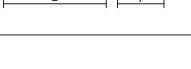
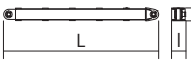

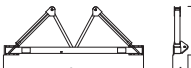
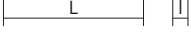


Encombrement et poids / Abmessungen und Gewicht / Dimensions and weight / Dimensiones y peso / Ingombro e peso
dimensões e pesos / габаритные размеры и вес

Partie tournante / Drehender Kranteil / Slewing crane part / Parte giratoria
Parte rotante / Parte rotativa / Поворотная часть : 55 m - 75 LVF



Partie tournante / Drehender Kranteil / Slewing crane part Parte giratoria / Parte rotante / Parte rotativa Поворотная часть	L (m)	I (m)	h (m)	kg (+/- 5%)		
Contre-flèche / Gegenausleger Counter-jib / Contra-flecha Controbraccio / Contra-lança Контр-стрела		6,69	4,64	4,43	6320	
Poinçon / Auslegerhaltebock Strut / Puntal Puntone / Extrator стойка		5,8	2,52	11,41	4625	
Cabine / Kabine Cab / Cabina Cabina / Cabina Кабина		3,4	1,9	2,57	1130	
Pivot / Krankopf Towerhead / Pivote Portaralla / Pivot Секция поворотной части		2,85	2,83	2,73	7290	
Elément de flèche / Auslegerelement Jib section / Elemento de flecha Elemento di braccio / Elemento de lança Секция стрелы		①	10,22	1,45	1,69	1010
Elément de flèche / Auslegerelement Jib section / Elemento de flecha Elemento di braccio / Elemento de lança Секция стрелы		②	5,15	1,39	1,52	490
		④	5,15	1,39	1,51	370
Elément de flèche / Auslegerelement Jib section / Elemento de flecha Elemento di braccio / Elemento de lança Секция стрелы		③	10	1,39	1,3	770
		⑤	10,65	1,3	2,29	965
Moufle / Hubflasche Pulley block / Aparejo Bozzello / Cadernal Полиспаст		1,31 0,6	0,22 0,24	1,58 0,88	285 230	
Treuil de levage (+ câble) / Hubwerk (+ Seil) Hoisting winch (+ rope) / Mecanismo de elevación (+ cabo) Argano di sollevamento (+ fune) Guincho de elevação (+ cabo) Подъемная лебедка (+ канатом)		75 LVF 100 LVF	2,47 3,09	1,62 1,6	1,4 1,73	3540 4275
Treuil de relevage (+ câble) / Auslegerverstellwerk (+ Seil) Luffing winch (+ rope) / Mecanismo de izado (+ cabo) Argano di Impennaggio braccio (+ fune) Mecanismo de Inclinação da Lança (+ cabo) лебедка подъема стрелы (+ канатом)		75 VVF	3,09	1,79	1,73	3375

Équipement de télescopage / Teleskopierausrüstung / Telescoping equipment Equipo de telescopaje / Equipaggiamento di telescopaggio / Equipamento de telescopagem Оборудование для телескопирования		L (m)	I (m)	h (m)	kg (+/- 5%)
Cage de télescopage / Teleskopwagen Telescopic cage / Jaula de telescopaje Gabbia di telescopaggio / Gaiola de telescopagem для телескопирования крана		7,26	3,78	3,98	5195
		11,5	4,21	4,36	8235
Mât / Mastwerk / Masts Mástil / Torre / Coluna Мачты					
S 68 J		7,74	2,1	2,1	4170
SR 68 J		7,74	2,1	2,1	5175
L 68 B2		3,26	2,12	2,12	1530
M609 A		5,32	2,13	2,13	3517
		-	-	-	47
		-	-	-	55
		-	-	-	122
		-	-	-	165
		-	-	-	148
M609 C		3,66	2,13	2,13	2492
		-	-	-	29
		-	-	-	41
		-	-	-	98
		-	-	-	140
		-	-	-	138
Bases / Kranbasen / Crane bases Bases / Basi / Bases Фундамент под кран					
Pieds de scellement / VerankerungsfüÙe Fixing angles / Pie de empotramiento Montante da annegare / Angulos fixadores анкера		1,31	0,8	0,8	500
		0,8	0,6	0,6	200
		1,35	0,65	0,65	390
		0,82	0,65	0,65	325
Mât-châssis / Grundmasteinheit Basic mast unit / Tramo-chasis Elemento base / Tramo-chassis Мачта для крепления к шасси		5,01	2,41	2,41	4390
		5,01	2,41	2,41	4720
Haubans / Mastabstützungen Struts / Tornapuntas Puntoni / Escoras Растяжка		4,51	0,29	0,29	420
		4,51	0,29	0,29	420
Sommier / Unterwagenhälfte Half-bearer / Testero Testata / Estrutura base Траверса		6,7	0,7	2,31	1600
		6,7	0,7	2,31	1600

Mécanismes / Triebwerke / Mechanisms / Mecanismos / Meccanismi
 Mecanismos / Механизмы

400 V - 50 Hz											ch - PS hp	kW	
	75 LVF 35 Optima	m/min	40	46	81	96	20	23	41	48	75	55	766 m
		t	7	6	3	2,25	14	12	6	4,5			
	100 LVF 35 Optima	m/min	52	62	108	140	26	31	54	70	100	75	1146 m
		t	7	6	3	1,75	14	12	6	3,5			
	75 VVF 30	min	2							75	55		
	RVF 162 Optima+	rpm	0 → 0,7							2 x 7,5	2 x 5,5		
	VB 21 A VB 22 RT 544 A1 2V R ≥ 13 m	m/min	13,5 - 27							4 x 7	4 x 5,2		

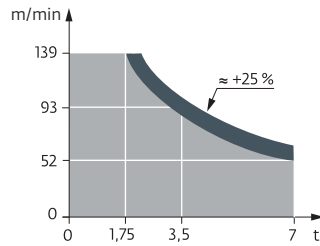
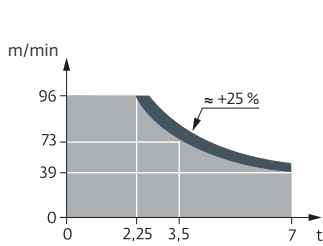
CEI 38	IEC 38	
400 V (+10% -10%)		75 LVF : 134 kVA 100 LVF : 154 kVA

480 V - 60 Hz											ch - PS hp	kW	
	75 LVF 35 Optima	m/min	40	46	81	96	20	23	41	48	75	55	766 m
		t	7	6	3	2,25	14	12	6	4,5			
	100 LVF 35 Optima	m/min	52	62	108	140	26	31	54	70	100	75	1146 m
		t	7	6	3	1,75	14	12	6	3,5			
	75 VVF 30	min	2							75	55		
	RVF 162 Optima+	rpm	0 → 0,7							2 x 7,5	2 x 5,5		
	VB 21 A VB 22 RT 544 A1 2V R ≥ 13 m	m/min	16 - 32							4 x 8,4	4 x 6,2		

CEI 38	IEC 38	
480 V (+6% -10%)		75 LVF : 134 kVA 100 LVF : 154 kVA

75 LVF 35 Optima

100 LVF 35 Optima



	FR	DE	EN	ES	IT	PT	RU
●	Réactions en service	Reaktionskräfte in Betrieb	Reactions in service	Reacciones en servicio	Reazioni in servizio	Reacções em serviço	Реакция при работе
■	Réactions hors service	Reaktionskräfte außer Betrieb	Reactions out of service	Reacciones fuera de servicio	Reazioni fuori servizio	Reacções fora de serviço	Реакция в покое
▲	Poids à vide sans lest avec flèche et hauteur maximum	Gewicht ohne Last, ohne Ballast, mit Ausleger und max. Höhe	Weight without load, without ballast, with jib and max. height	Peso en vacío sin lastre, con flecha y altura máxima	Peso a vuoto, senza zavorra, con braccio e altezza massimi.	Peso em vazio sem lastro com lança e altura máxima.	Вес пустого, без балласта, со стрелой, максимальной высоты.
▲	Poids total du lest	Ballast-Gesamtgewicht	Total ballast weight	Peso total del lastre	Peso totale della zavorra	Peso total do lastro	Общий вес балласта
▢	Courbes de charges sans plate-forme d'intervention	Lastkurven ohne Arbeitsbühne	Load curves without inspection platform	Curvas de cargas sin plataforma de servicio	Curve di carico senza piattaforma di intervento	Curvas de carga sem plataforma de intervenção	Кривые грузоподъемности без технической платформой
▢	Courbes de charges avec plate-forme d'intervention déduire 0.1 t	Lastkurven mit Arbeitsbühne 0.1 t abziehen	Load curves with inspection platform, deduct 0.1 t	Curvas de cargas con plataforma de servicio descontar 0.1 t	Curve di carico con piattaforma di intervento detrarre 0.1 t	Curvas de carga com plataforma de intervenção deduzir 0.1 ton	Кривые грузоподъемности с технической платформой - вычесть 0.1 т
⊗	Axe articulation flèche	Auslegergelenks-achse	Jib articulation axis	Eje de articulación de la flecha	Perno di articolazione del braccio	Eixo de articulação da lança	Ось шарнира стрелы
⊞	Position girouette	Windfreistellung	Weathervane position	Posición veleta	Libera rotazione	Posição em cata-vento	Флюгер
🚛	Camion 13.4 m	Lkw 13.4 m	Lorry 13.4 m	Camión 13.4 m	Camion 13.4 m	Camião 13.4 m	Ррузовой автомобиль 13.4 м
▤	Conteneur High Cube 40' et/ou Flat Rack 20'	Container High Cube 40' und/oder Flat Rack 20'	Container High Cube 40' and/or Flat Rack 20'	Contenedor High Cube 40' y/o Flat Rack 20'	Container High Cube 40' e/ou Flat Rack 20'	Contentor High Cube 40' e/ou Flat Rack 20'	40-футовый контейнер повышенной вместимости High Cube, и/или 20-футовая открытая платформа Flat Rack
➔	Cadre d'ancrage serré	Fester Verankerungsrahmen	Tightened anchorage frame	Marco de anclaje de apriete	Quadro di ancoraggio stretto	Quadro de amarração apertado	Прикрепленная анкерная рама
➔	Cadre d'ancrage desserré	Looser Verankerungsrahmen	Loosened anchorage frame	Marco de anclaje de desapriete	Quadro di ancoraggio allentato	Quadro de amarração solto	Отсоединенная анкерная рама
⬆	Levage	Heben	Hoisting	Elevación	Sollevamento	Elevação	Подъем
⬆	Relevage	AL-Verstellen	Luffing	Izado	Brandeggio	Levantamento	Маховый подъем
⬆	Orientation	Schwenken	Slewing	Orientación	Rotazione	Rotação	Поворот
⬆	Translation	Kranfahren	Travelling	Traslación	Traslazione	Translação	Перемещение крана
⚡	Puissance nominale	Nennleistung	Rated power	Potencia nominal	Potenza nominale	Potência nominal	Номинальная мощность
ℹ	Nous consulter	Auf Anfrage	Consult us	Consultarnos	Consultateci	Consultar-nos	Проконсультируйтесь у нас

⚠ Document commercial non contractuel. Unverbindliches Vertriebsdokument. Für technische Informationen, siehe die entsprechenden Anweisungen. This commercial document is not legally binding. For any technical information, please refer to the corresponding instructions. Documento comercial no contractual. Para cualquier información técnica, ver la noticia correspondiente. Documento commerciale non vincolante, per tutte le informazioni tecniche fare riferimento al catalogo istruzioni. Documento comercial não contratual. Para qualquer informação técnica complementar consultar as respectivas instruções. Этот коммерческий документ не является юридически обязательным. Для получения технической информации, см. соответствующие инструкции.



www.manitowoc.com

Americas
Manitowoc, Wisconsin, USA
 Tel: +1 920 684 6621
 Fax: +1 920 683 6277

Shady Grove, Pennsylvania, USA
 Tel: +1 717 597 8121
 Fax: +1 717 597 4062

Europe, Middle East, Africa
Ecully, France
 Tel: +33 (0)4 72 18 20 20
 Fax: +33 (0)4 72 18 20 00

China
Shanghai, China
 Tel: +86 21 6457 0066
 Fax: +86 21 6457 4955

Greater Asia-Pacific
Singapore
 Tel: +65 6264 1188
 Fax: +65 6862 4040

Ref. MCR 225A - 2012 41 - 1 EN