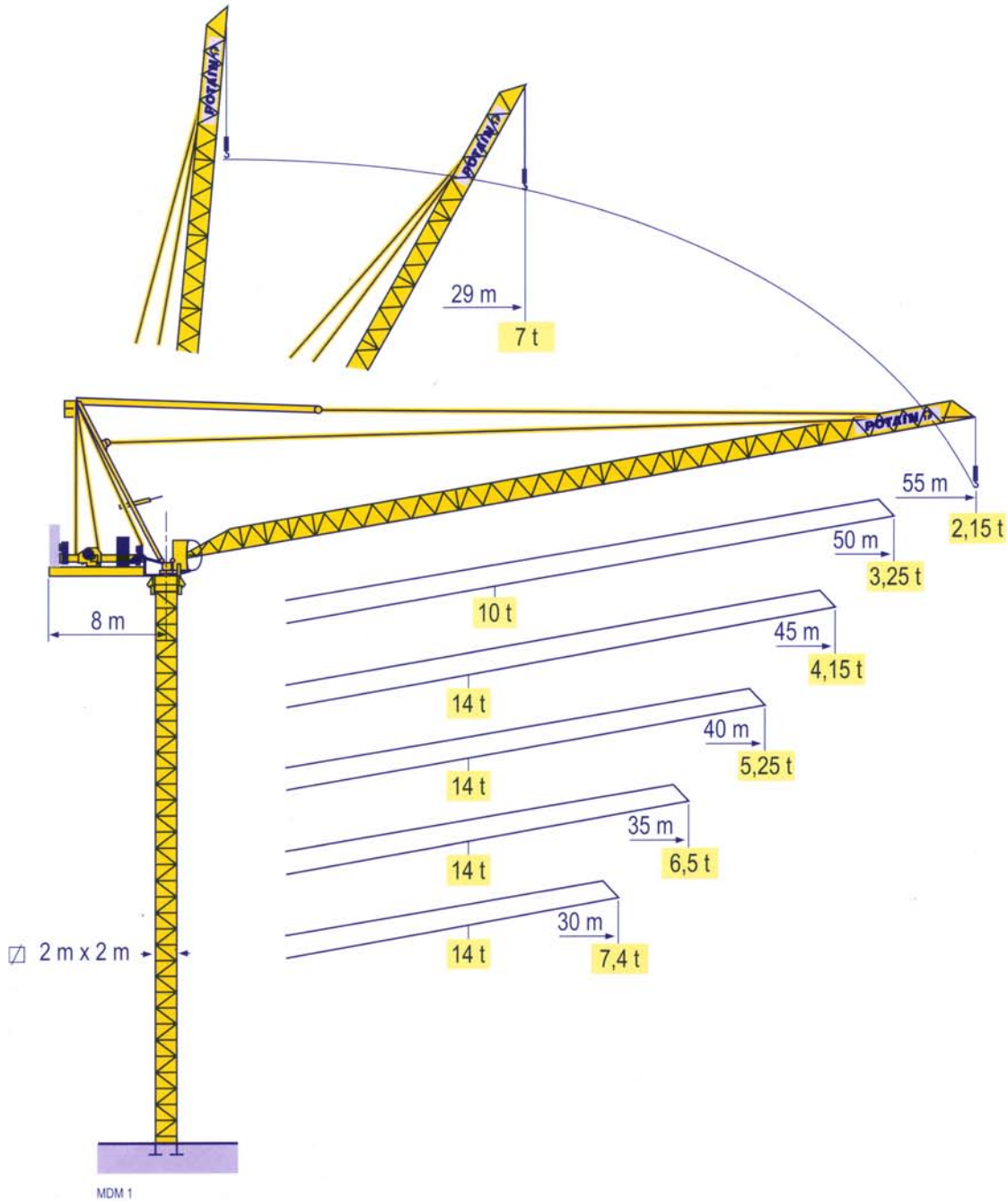


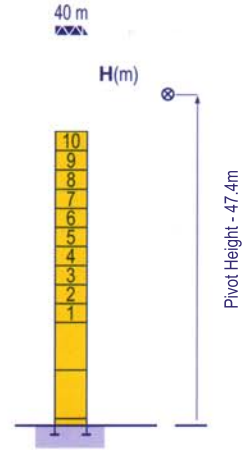
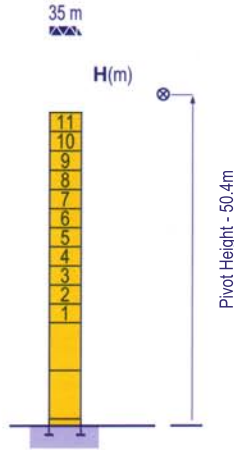
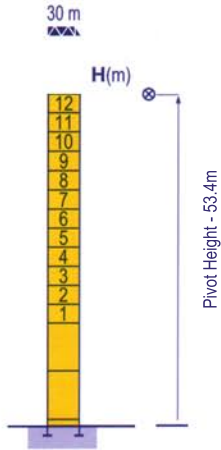
## MCR 225 A

Serial Number: \_\_\_\_\_

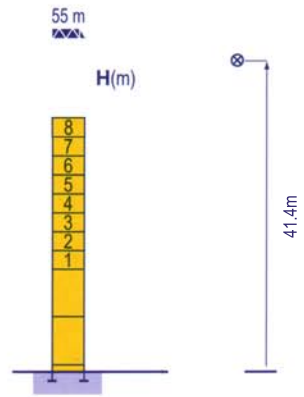
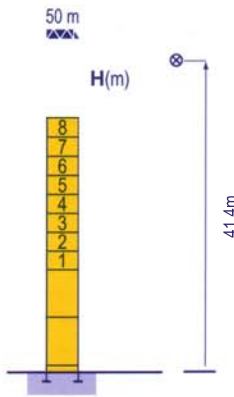
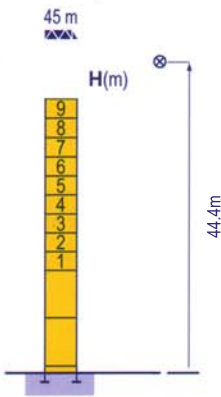


# Free Standing Mast Height Wind Zone NZS 4203:1992 All Regions, Category IV

Telescopic 2 m

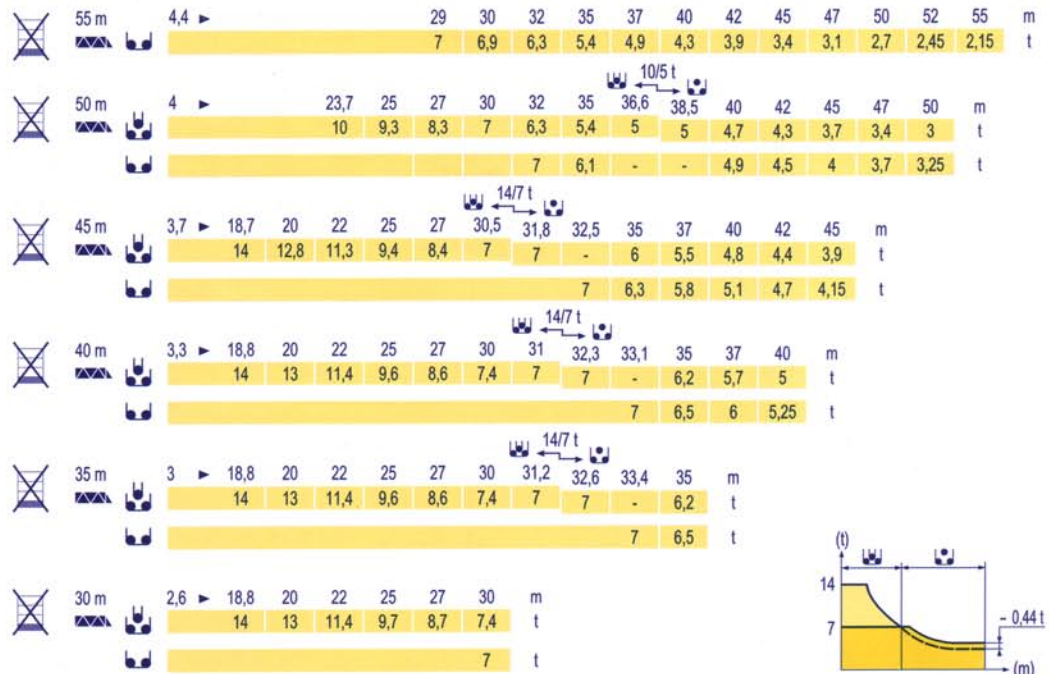


Telescopic 2 m

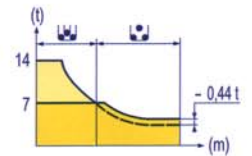


Load diagrams

MCM 1

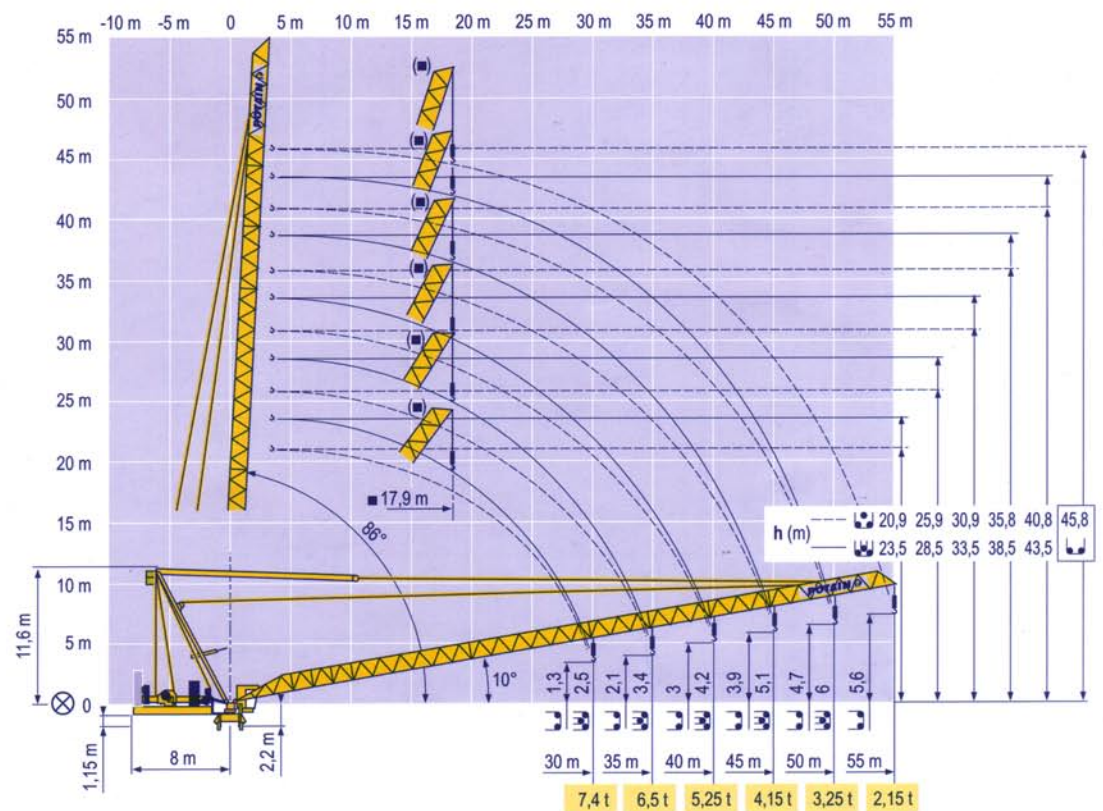


= - 0,1 t



Luffing jib

MCM 1



MCR 225 A



GB

Load diagrams without jib-end inspection platform



Load diagrams with jib-end inspection platform deduct 0,1 t



Jib hinge shaft



Weathervaning position

Mechanisms

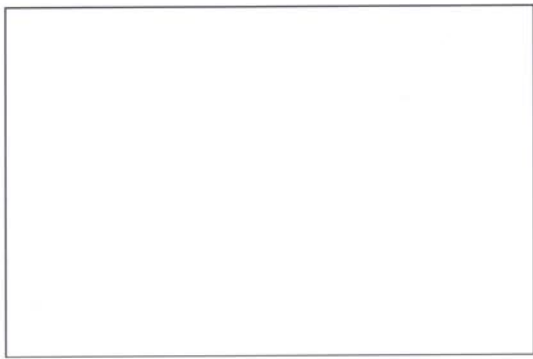
MDM 1

MCR 225 A - 50 Hz															hp	kW											
	75 LVF 35	m/min	0	→	40	→	46	→	81	→	96	0	→	20	→	23	→	41	→	48	75	55	766 m				
	Optima	t	7		6		3		2,25	14		12		6		4,5											
	100 LVF 35	m/min	0	→	52	→	62	→	108	→	140	0	→	26	→	31	→	54	→	70	100	75	1146 m				
	Optima	t	7		6		3		1,75	14		12		6		3,5											
	150 LCC 35	m/min	0	→	84	→	100	→	124	→	166	→	200	0	→	42	→	50	→	62	→	83	→	100	150	110	1004 m
		t	7		5,25		3,5		1,75		0,875	14		10,5		7		3,5		1,75							
	100 V VF 40	m/min	2 min												100	75											
	RVF 162 Optima +	rpm	0 → 0,7												2 x 7,5	2 x 5,5											
CEI 38			IEC 38			<b>kVA</b>																					
400 V (+6% -10%)			75 LVF : 165 kVA 100 LVF : 190 kVA 150 LCC : 240 kVA																								

MCR 225 A - 60 Hz															hp	kW											
	75 LVF 35	m/min	0	→	40	→	46	→	81	→	96	0	→	20	→	23	→	41	→	48	75	55	766 m				
	Optima	t	7		6		3		2,25	14		12		6		4,5											
	100 LVF 35	m/min	0	→	52	→	62	→	108	→	140	0	→	26	→	31	→	54	→	70	100	75	1146 m				
	Optima	t	7		6		3		1,75	14		12		6		3,5											
	150 LCC 35	m/min	0	→	84	→	100	→	124	→	166	→	200	0	→	42	→	50	→	62	→	83	→	100	150	110	1004 m
		t	7		5,25		3,5		1,75		0,875	14		10,5		7		3,5		1,75							
	100 V VF 40	m/min	2 min												100	75											
	RVF 162 Optima +	rpm	0 → 0,7												2 x 7,5	2 x 5,5											
CEI 38			IEC 38			<b>kVA</b>																					
480 V (+6% -10%)			75 LVF : 165 kVA 100 LVF : 190 kVA 150 LCC : 270 kVA																								

- GB
- Hoisting
- Luffing
- Slewing

This commercial document is not legally binding.  
For any technical information, please refer to the corresponding instructions.



**Manitowoc Crane Group Asia Pte Ltd**  
Manitowoc Crane Group  
4 Kwong Min Road  
Singapore 628707  
Tel: +65 6264 1188  
Fax: +65 6862 4040  
www.manitowoccrane.com

**Americas**  
Tel : +1 888 479 7278  
Tel : +1 717 593 2000

**Europe - Middle East - Africa**  
Tel : +33 (0) 4 72 81 50 00  
Tel : +44 (0) 191 522 2000

**Asia - Pacific**  
Tel : +65 6264 1188  
Fax : +65 6862 4142

www.manitowoccrane.com

**MCR 225 A**  
Réf. 2006 06 MDM 1

Copyright.Reproduction interdite © POTAIN 2006

Réalisation Sedoc