

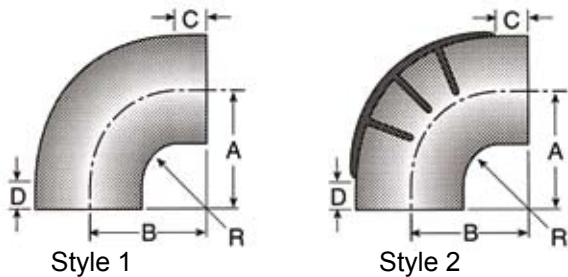
AIR INTAKE - RUBBERWARE

TEE BOLT CLAMPS



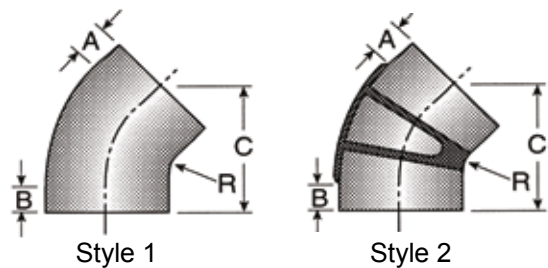
STANDARD TEE BOLT CLAMP – STAINLESS STEEL			
SUIT RUBBERWARE ID		PART NO.	ACTUAL CLAMP ID
76mm	3.0"	3316656S	3.25 – 3.56"
102mm	4.0"	3316658S	4.25 – 4.56"
127mm	5.0"	3316660S	5.25 – 5.56"
140mm	5.5"	3316661S	5.75 – 6.06"
152mm	6.0"	3316662S	6.38 – 6.69"
178mm	7.0"	3316663S	7.25 – 7.76"

90° ELBOWS



90° ELBOWS								
ID	PART NO.	OD	A	B	C	D	R	
76mm 3.0"	3316566S	89mm 3.5"	5.25"	5.25"	1.75"	1.5"	2"	
102mm 4.0"	3316568S	114mm 4.5"	5.75"	5.75"	1.75"	1.5"	2"	
127mm 5.0"	3316570S	140mm 5.5"	6.12"	6.12"	1.75"	1.62"	1.75"	
140mm 5.5"	3316571S	152mm 6"	6.5"	6.5"	1.75"	1.75"	1.75"	
140mm 5.5"	89829K	152mm 6"	8"	5.5"	4.5"	1.5"	1"	
152mm 6.0"	3316573S	165mm 6.5"	7"	7"	2.25"	2"	1.75"	
152mm 6.0"	89830K	165mm 6.5"	5"	5"	1.5"	1.5"	1"	
152mm 6.0"	89826K	165mm 6.5"	7"	9"	4.25"	2"	1.75"	
178mm 7.0"	3316576S	194mm 7.62"	7.56"	7.56"	2.25"	2"	1.75"	

45° ELBOWS

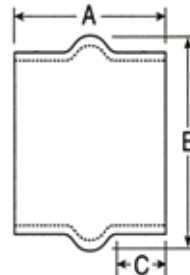


45° ELBOWS								
ID	PART NO.	OD	A	B	C	R		
76mm 3.0"	3316579S	89mm 3.5"	1.5"	1.5"	5.5"	2"		
102mm 4.0"	3316581S	114mm 4.5"	1.5"	1.5"	5.5"	2"		
127mm 5.0"	3316583S	140mm 5.5"	1.62"	1.62"	5.25"	1.75"		
140mm 5.5"	3316584S	152mm 6"	1.75"	1.75"	6.25"	1.75"		
152mm 6.0"	3316585S	165mm 6.5"	2"	2"	6.5"	1.75"		
178mm 7.0"	3316586S	194mm 7.62"	2.25"	2.25"	8"	1.75"		

AIR INTAKE

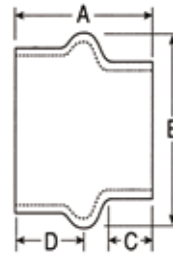
HUMP HOSE

HUMP HOSE					
ID		PART NO.	A	B	C
76mm	3.0"	3316606S	5.25"	4.5"	2"
102mm	4.0"	3316608S	5.25"	5.37"	2"
127mm	5.0"	3316610S	6"	6.12"	2.25"
140mm	5.5"	3316611S	6"	7"	2.25"
152mm	6.0"	3316612S	7"	7.5"	2.75"
178mm	7.0"	3316613S	7"	8.5"	2.5"



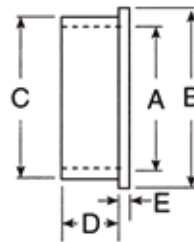
HUMP HOSE REDUCER

HUMP HOSE REDUCERS						
ID x ID		PART NO.	A	B	C	D
127mm x 102mm	5.00 x 4.00"	3316618S	5.5"	6.5"	1.5"	1.75"
140mm x 102mm	5.50 x 4.00"	3316619S	6"	7"	1.87"	2"
140mm x 127mm	5.50 x 5.00"	3316620S	6"	7"	1.87"	2"
152mm x 127mm	6.00 x 5.00"	3316621S	6"	7.5"	1.87"	2"
152mm x 140mm	6.00 x 5.50"	3316622S	6"	7.5"	2"	2"
178mm x 140mm	7.00 x 5.50"	3316623S	7"	8.5"	2.25"	2.75"



REDUCING INSERT SLEEVE

HUMP HOSE REDUCERS					
A	B	PART NO.	C	D	E
4.50	5.50	3950450S	5.00	1.50	.25
4.00	5.50	3950400S	5.00	1.50	.25
5.00	6.00	3316631S	5.50	1.50	.25
5.00	6.50	3316632S	6.00	1.50	.50
5.50	6.50	3316633S	6.00	1.50	.25



REDUCING 90° ELBOWS

REDUCING 90° ELBOWS									
A (ID)	B (ID)		PART NO.	C	D	E	F	R	
127mm	5.0"	152mm	6"	3316589S	7"	6"	1.5"	1.7"	1.5"
140mm	5.5"	152mm	6"	3316590S	6.75"	6.75"	1.75"	1.75"	1.75"
152mm	6.0"	178mm	7"	3316593S	9"	7.56"	3"	3"	0.5"

