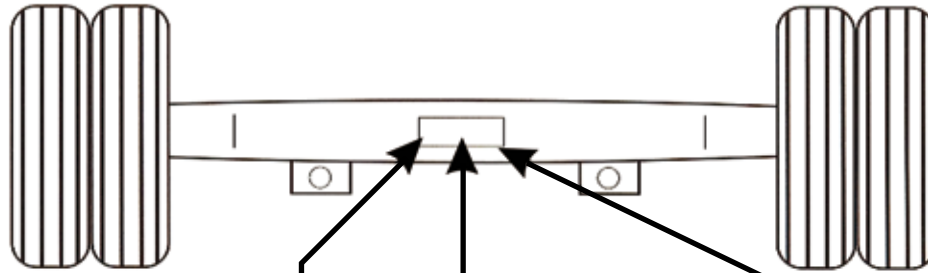


## AXLE TYPE IDENTIFICATION



All trailer axles have some form of ID Tag attached generally on the axle beam in the centre showing manufacturer, model, and serial no. which help us identify replacement parts.



|  |   |
|--|---|
|  | <p><b>MONTGOMERY ALABAMA</b></p> <p>97F-076062 77.50</p> <p>D22RM601A741 - 1117</p> |
|--|---|

|   |   |
|---|---|
| <p>AXLE TYPE</p> <p>APPROVAL No P41ABS15STVZ0</p> <p>SERIAL No A999999 H97 0000</p> <p>NOM CAPACITY 9300 KG V MAX</p> <p>COMB CAPACITY 9300 KG 105 KM/H</p> |  <p><b>MERITOR</b></p> <p><i>We work for you.</i></p> <p>WREXHAM LL12 0PB UK</p> <p>ASSEMBLED IN THE EEC</p> |
|---|---|

BPW Original spare parts, Series H/R; KH/KR; NH/NR

|   |  |
|---|--|
| <p>Riveted type plate up to year of manufacture 1999</p>  | <p>Glued type plate from year of manufacturer 2000</p>                               |
|    |  |
| <p>Stat. = Max. static axle load on ground</p> <p>Tech. = "permissible techn. axle load"</p> <p>= Test load of wheel brakes</p> |  |

# TRAILER AXLE

## AXLE TYPE IDENTIFICATION

Once an axle has been exposed to the elements, and gravel etc. picked up by the wheels, the tag may be of little help. Most manufacturers stamp identification numbers on the end of the axle spindle. Use these steps to help us identify a trailer axle for you.

### STEP 1

Trailer Manufacturer Name, Trailer Model ?

### STEP 2

If axle tag is still attached can you read the axle manufacturer ?

### STEP 3

Hub and Wheel Type ? Is it 8 or 10 stud, or 3,5 or 6 spoke Spider Hub ?

|           |        |         |            |   |   |   |       |
|-----------|--------|---------|------------|---|---|---|-------|
| Wheel Hub | 8 Stud | Stud 10 | Spider Hub | 3 | 5 | 6 | Spoke |
|-----------|--------|---------|------------|---|---|---|-------|

What size tyre?

Are there any cast or stamp numbers on the hub ?

|     |       |       |     |       |
|-----|-------|-------|-----|-------|
| 15" | 17.5" | 19.5" | 20" | 22.5" |
|-----|-------|-------|-----|-------|

Are there any cast or stamp numbers on the drum ?

|         |     |         |       |
|---------|-----|---------|-------|
| 12-1/4" | 15" | 16-1/2" | Other |
|---------|-----|---------|-------|

What size Brake Drum ?

What style and size are the studs and wheel nuts ?

### STEP 4

Hub cap style and size ?

|            |        |
|------------|--------|
| Oil Filled | Grease |
|------------|--------|

Many axles use a CR Hubcap @ bolt circle 5-1/2"

|        |        |
|--------|--------|
| 5 Bolt | 6 Bolt |
|--------|--------|

Some hubcaps are screw in with external thread eg Early BPW, Propar

|                 |             |                  |
|-----------------|-------------|------------------|
| External Thread | Thread Diam | Across the Flats |
|-----------------|-------------|------------------|

Hubcap made from ?

Screw in style with internal thread eg Late BPW Eco series.

|                 |             |                  |
|-----------------|-------------|------------------|
| Internal Thread | Thread Diam | Across the Flats |
|-----------------|-------------|------------------|

Hubcap made from ?

### STEP 5

Axle beam style

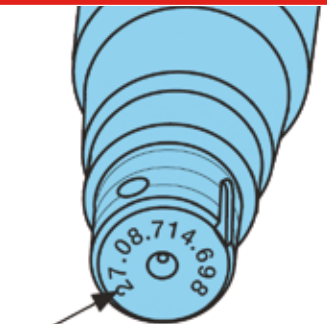
|                  |       |       |        |
|------------------|-------|-------|--------|
| 5" (127mm) Round | 120mm | 150mm | Square |
|------------------|-------|-------|--------|

Spindle Number

### STEP 6

What are the Inner and Outer Bearing Numbers, Hub Seal ?

## AXLE TYPE IDENTIFICATION



BPW axle number punched into the front end of the axle stud.

While the Axle ID Tag is the most complete identifier for BPW axle, the hubcap style can help with parts enquiry.

| Hubcap Style                            | Across | Thread   | Year            |         |
|---|--------|----------|-----------------|---------|
| <b>Cast Hexagonal Cap</b>               | Flats  | External | 1950-early 70's |         |
| <b>Pressed Steel Hexagonal Cap</b>      |        | External | 1975-1985       |         |
| <b>Round Cap Flat on Opposite Sides</b> |        | External | 1986-1996       |         |
| Axle Series Conventional Hub            |        | H        | K               | N       |
| Drum Diameter                           |        | 420      | 360             | 300     |
| Hubcap Thread 6000-9000Kg Axle          | 95mm   | 115x2    | 115x2           | 115x2   |
| Hubcap Thread 10000-12000Kg Axle        | 110mm  | 125x2    | 125x2           | 125x2   |
| Hubcap Thread 13000-14000Kg Axle        | 120mm  | 135x3    | 135x3           | 135x3   |
| <b>Round Cap Flat on Opposite Sides</b> |        | Internal | 1996-on         |         |
| Axle Series Eco/Eco Maxx Hub            |        | H        | K               | N       |
| Drum Diameter                           |        | 420      | 360             | 300     |
| Hubcap Thread 6000-9000Kg Axle          | 110mm  | 125x2    | 125x2           | 125x2   |
| Hubcap Thread 6000-12000Kg Axle         | 110mm  | 135x2    | 135x2           | 135x2   |
| Hubcap Thread 6000-12000Kg Axle         | 110mm  | 136x2.5  | 136x2.5         | 136x2.5 |
| Modified 09/00                          |        |          |                 |         |

| COMMON BRAKE SIZES AND DESIGNS USED IN NZ |             |              |                |
|---|-------------|--------------|----------------|
| Series                                    | Tyre Size   |              | Drum Diameter  |
| SN4218                                    | 20" 22.5"   | 9000-10000Kg | 420 x 180mm    |
| SN4220                                    | 20" 22.5"   | 12000Kg+     | 420 x 200mm    |
| SN3620                                    | 19.5"       |              | 360 x 200mm    |
| SN3020                                    | 15" 17.5"   |              | 300 x 200mm    |
| Series                                    | Tyre Size   |              | Rotor Diameter |
| SB3745                                    | 19.5" 22.5" |              | 370mm          |
| SB4345                                    | 22.5"       |              | 430mm          |

### DISC BRAKE

Identification follows the basic rules covered in part 1, and for brake type.

SB3745 has a triangular calliper mounting bolt pattern.

SB4345 has inline calliper mount.

# TRAILER AXLE

## AXLE TYPE IDENTIFICATION

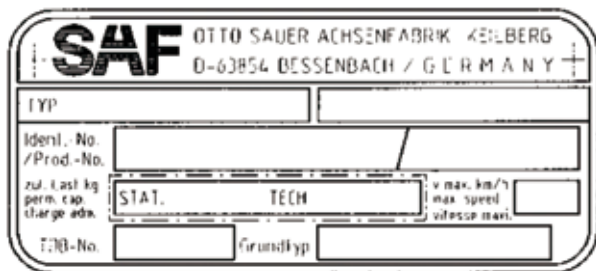


**Spare parts service for SAF axles and suspension systems.**

Correct axle identification and serial number is necessary to ensure correct parts are supplied, these can be found as follows:



**Identification of axles when type plate not available.** Production no. of axle on RH side of axle tube.



**Type plate (on the inside of the trailing arm or axle beam).**