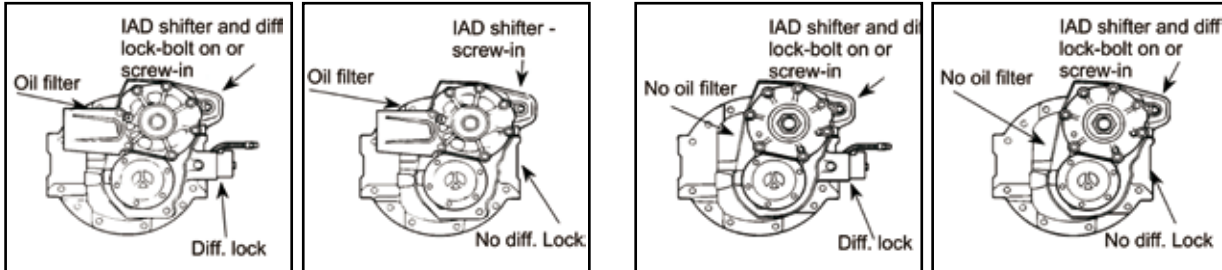
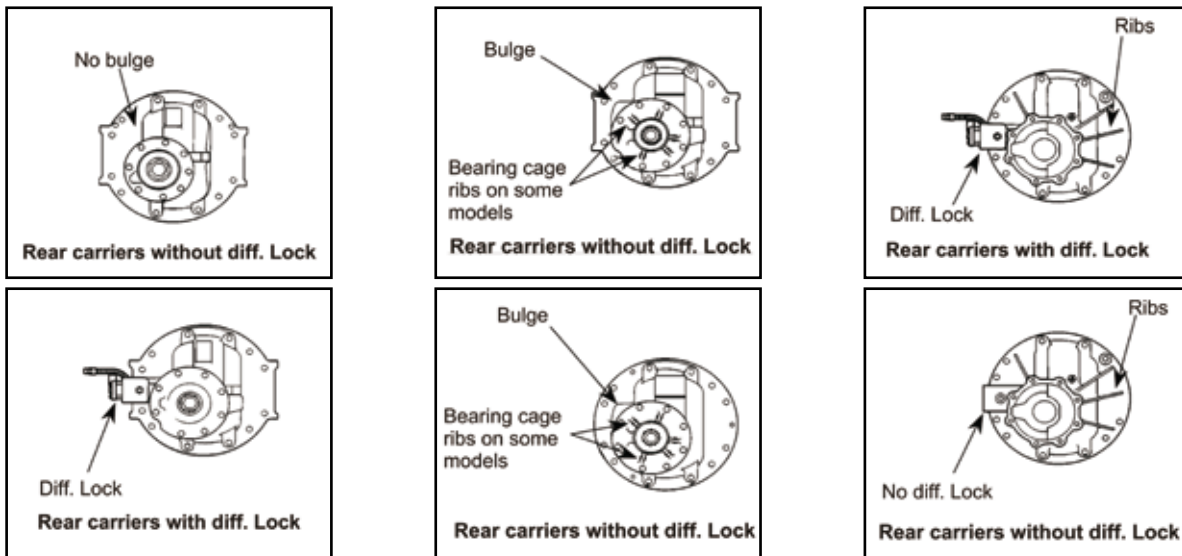


DIFFERENTIAL

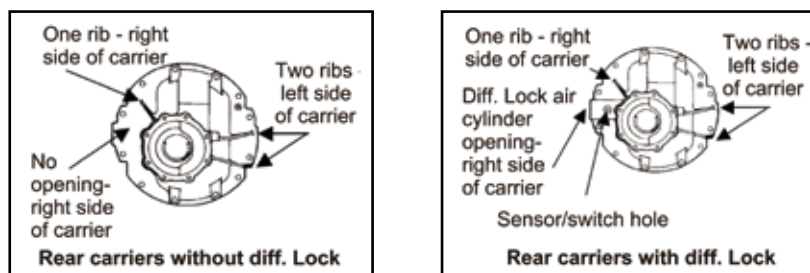
VISUAL IDENTIFICATION CHART 140 & 160 SERIES FORWARD CARRIERS



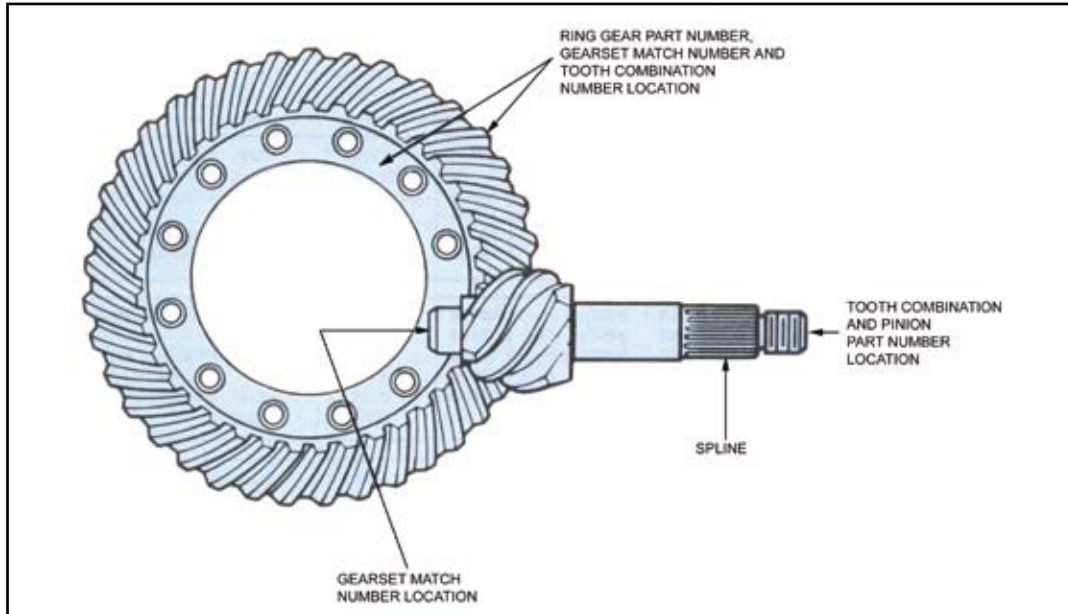
140 SERIES SINGLE & REAR CARRIERS



160 SERIES SINGLE & REAR CARRIERS



C.W.P IDENTIFICATION



LUBRICANT VISCOSITY ND TEMPERATURE CHART		
Meritor Hypoid Gear Oil Specification	Cross Reference	Minimum Outside Temperature
O-76-A	S.A.E 85W/140	-12.2°C
O-76-B	S.A.E 80W/140	-26.1°C
O-76-D	S.A.E 80W/90	-26.1°C
O-76-E	S.A.E 75W/90	-40°C

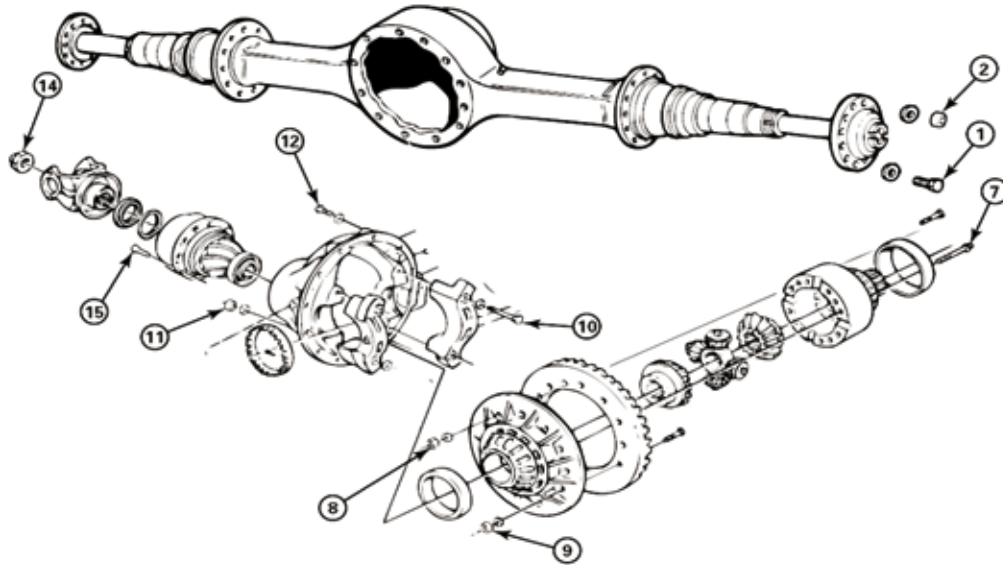
There is no upper limit on these outside temperatures, but the axle sump temperature must never exceed 121°C

OIL CHANGE INTERVAL EXAMPLES			
Vehicle Operation	Linehaul	City Delivery	Heavy Haul
Check oil level and breather.	Every 40,000km or the fleet maintenance interval, whichever comes first.	Every 16,000km, once a month or the fleet maintenance interval, whichever comes first.	Every 5,000km, once a month or the fleet maintenance interval, whichever comes first.
Petroleum based oil change on axle with or without pump and filter sytem	Every 160,000km or annually, whichever comes first.	Every 80,000km or annually, whichever comes first.	Every 80,000km or annually, whichever comes first.
Meritor approved synthetic oil change on axle without pump & filter system.	Every 400,000km or 3 years, whichever comes first.	Every 160,000km or annually, whichever comes fi rst.	Every 80,000km or annually, whichever comes first.
Meritor approved synthetic oil change on axle with pump & filter system.	Every 800,000km.	Every 400,000km.	Every 160,000km.
Filter change on axle with pump & filter system.	Every 160,000km.	Every 160,000km.	Every 160,000km.

NOTE: Full Meritor lubricant specs and service manual available on request.

DIFFERENTIAL

FASTENER TORQUE INFORMATION

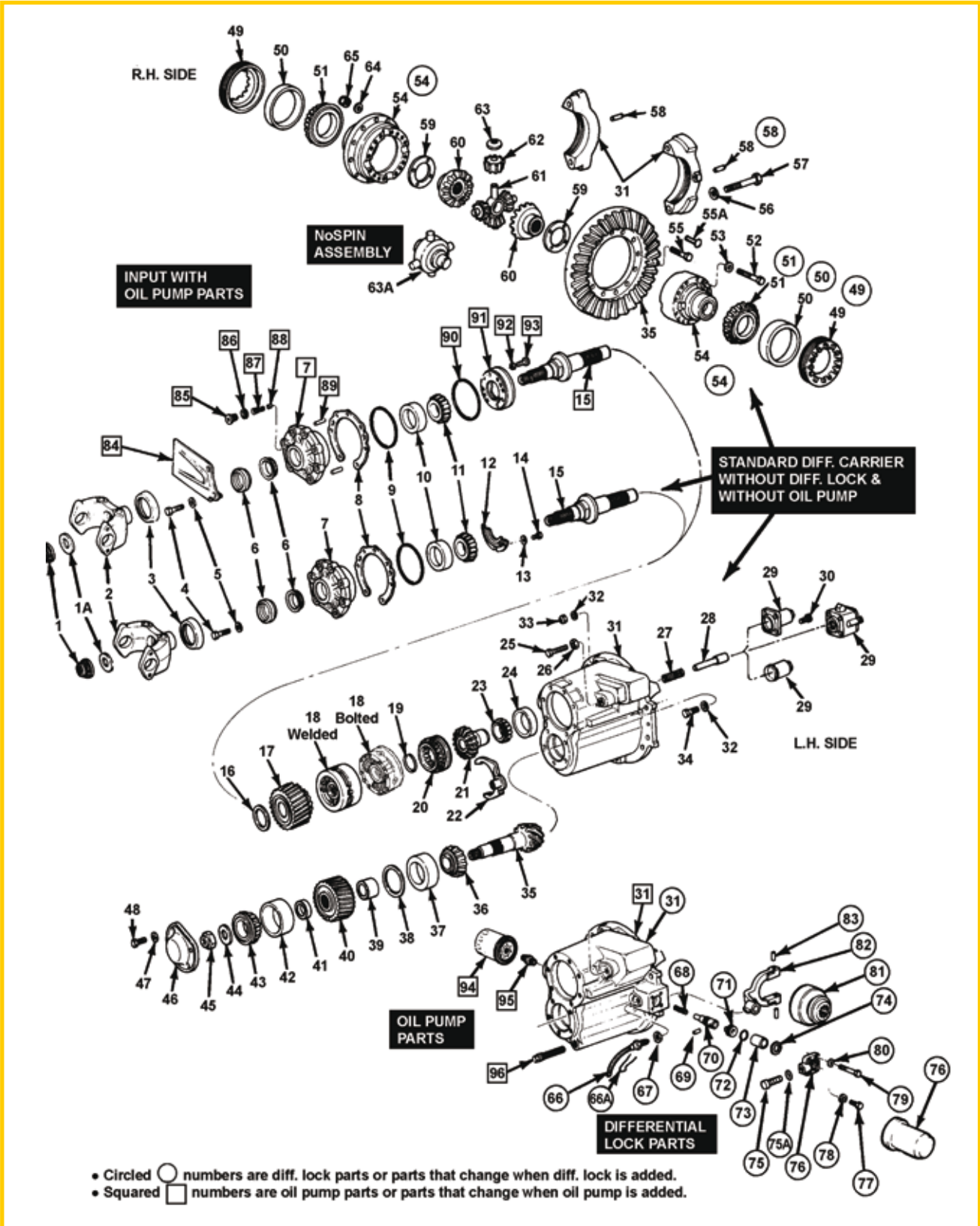


No.	Description	Thread Size	Nm	
1	Capscrew, Axle Shaft	.31-24	24-33	
		.50-13	115-156	
2	Nut, Axle Shaft Stud	Plain Nut	68-102	
		.44-20	102-156	
		.50-20	149-224	
		.56-18	203-312	
		.62-18		
		Lock Nut	54-88	
		.44-20	88-136	
		.50-20	136-197	
		.56-18	176-258	
		.62-18		
7	Capscrew, Differential Case	.38-16	48-68	
		.44-14	81-102	
		.50-13	115-156	
		.56-12	176-224	
		.62-11	244-312	
		Grade 10.9 Flange Head	M12 x 1.75	115-140
		Grade 10.9 Standard Hex Head	M12 x 1.75	100-130
Grade 12.9 Standard Hex Head	M12 x 1.75	143-169		
	Grade 12.9 Flange Head	M16 x 2	275-340	
	Grade 12.9 Standard Head	M16 x 2	300-420	
	8	Nut, Differential Case Bolt	.50-13	102-136
.50-20			115-156	
.62-11			203-258	
.62-18			244-312	
M12 x 1.75			100-130	
M16 x 2			300-420	
9			Nut, Ring Gear Bolt	.50-13
	.50-20	115-156		
	.62-11	203-258		
	.62-18	244-312		
	M2 X 1.25	90-110		
	M2 x 1.75	104-115		
	Flange Head	M16 x 1.5		260-190
	Standard Hex Head	M16 x 1.5		265-355

No.	Description	Thread Size	Nm
10	Capscrew, Bearing Cap	.56-12	149-197
		.62-11	203-258
		.75-10	366-475
		.88-14	488-637
		.88-9	576-746
		M16 x 2	245-300
		M20 x 2.5	470-585
11	Nut, Housing to Carrier Stud	.44-20	68-102
		.50-20	102-156
		.56-18	149-224
		.62-18	203-312
12	Capscrew, Carrier to Housing	.44-14	68-102
		.50-13	102-156
		.56-12	149-224
		.62-11	203-312
		.75-10	366-542
		M12 x 1.75	100-120
		M16 x 2	245-300
14	Input Yoke-to-Input Shaft Nut	Refer to Table K	
15	Capscrew, Bearing Cage	.38-16	41-68
		.44-14	68-102
		.50-13	102-156
		.56-12	149-224
		.62-11	203-312
		M12 x 1.75	90-150

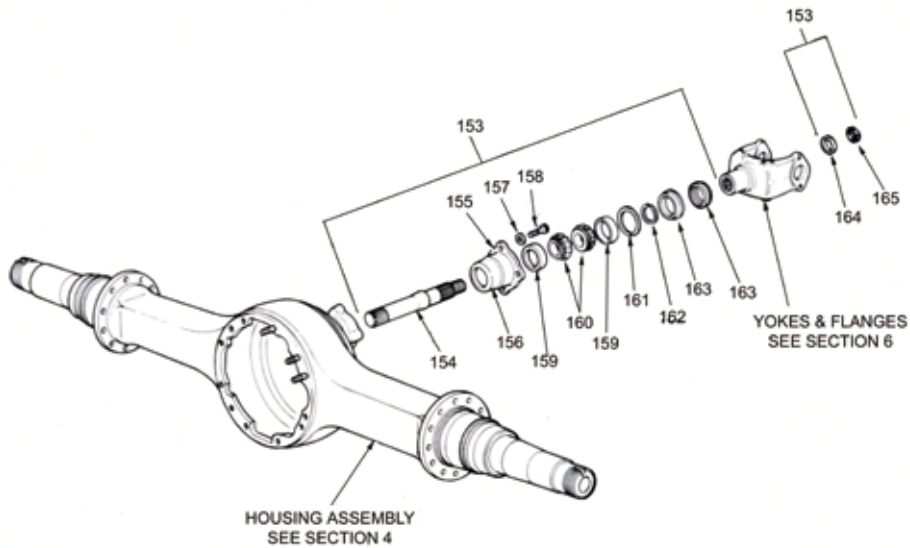


FORWARD CARRIERS OF TANDEM AXLES



DIFFERENTIAL

THROUGH SHAFT



CARRIERS FOR SINGLE AXLES AND REAR TANDEM AXLES

