



Now part of Daimler Trucks, FUSO trucks is the re-branding of Mitsubishi to help identify a new era for one of New Zealand's most popular trucks. FUSO trucks have earned a reputation for reliability and innovation, and are supported with the country's leading dealer networks. Adding this franchise late 2005, our Hamilton facility is one of 22 Parts and Service dealers throughout New Zealand.

The FUSO models include: Canter, famous for load-carrying efficiency with a whole range of big new ideas in comfort, convenience, power and safety.

The Fighter range, versatile mid-size trucks, ideal for general freight, contracting, agriculture, roading, and loose metal tipping.

The heavy truck range Shogun features FUSO performance, reliability and comfort, in 6x4 and 8x4 configurations. The efficient and powerful 6M70-ECR is the first, heavy duty diesel on New Zealand roads with electronic common rail injection.



# TRUCK

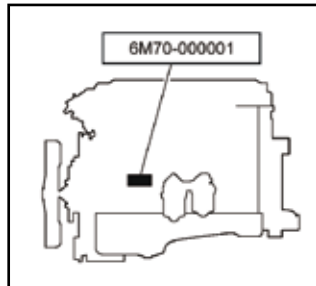
## FUSO VEHICLE I.D.

The serial numbers for chassis and engines are assigned to the respective vehicles and engines in manufacturing sequence: every vehicle and engine has its own numbers. These numbers are required for registration and incidental inspection of the vehicle.

**Chassis Number**



**Engine Number**



**Engine Name Plate**

